

Legend

- Acid Sulfate Soils (ASS)**
- ASS - Known actual or potential
 - ASS - Potential Assessment Area
- Indicative Contours**
- 5 metres AHD contour
 - 20 metres AHD contour
- Other**
- Cadastre

Note: The ASS - Potential Assessment Area overlay generally indicates areas at or below the 20 metres AHD contour level. Acid Sulfate Soils may or may not be present.

Note: For development located within either of the Acid Sulfate Soils overlays shown on this map, the Tables of Assessment located in Part 5 of the planning scheme must be referred to in order to determine the category of development and the category of assessment (i.e. to determine if there are development requirements or if a development application to Council is required). The Acid Sulfate Soils overlays shown on this map include the ASS - Known actual or potential areas, and the ASS - Potential Assessment Area.

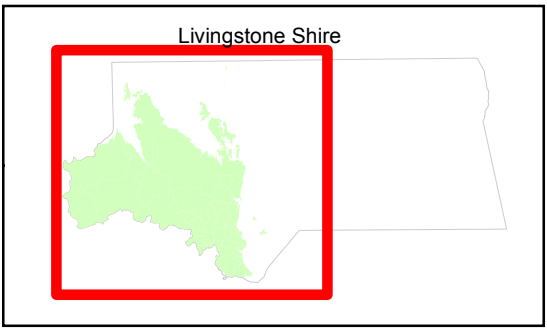
Note: The contours shown on this map are indicative in nature and should be considered as a guide. Contour levels should be determined from a recent survey for the site or from the most recent Council or State Government contour information for the site (if available).

N

Scale @ A3
1:700,000

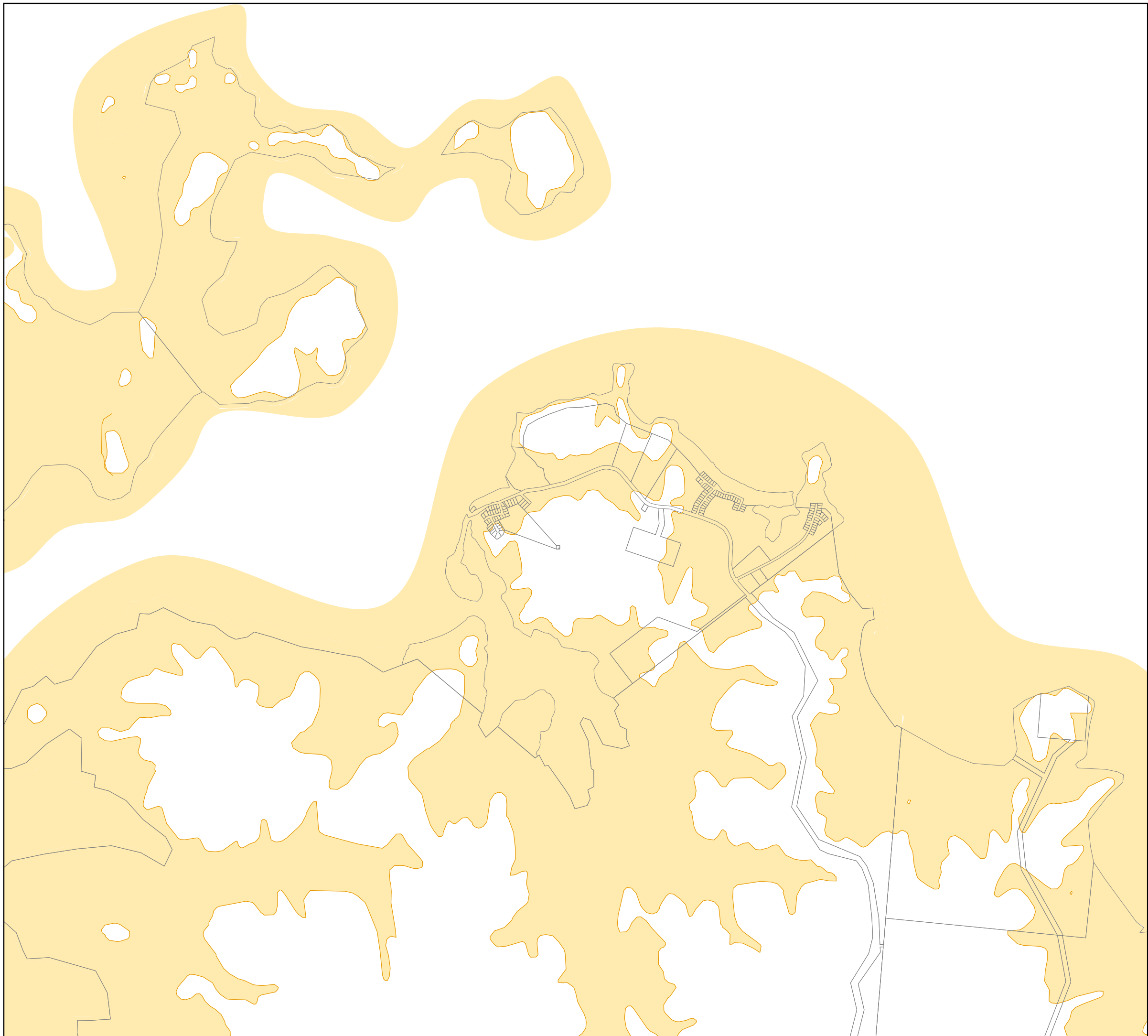


Copyright protects this publication. Reproduction by whatever means is prohibited without prior written permission of the Chief Executive Officer, Livingstone Shire Council. Livingstone Shire Council will not be held liable under any circumstances in connection with or arising out of the use of this data nor does it warrant that the data is error free. Any queries should be directed to the Customer Service Centre, Livingstone Shire Council or telephone 1300 790 919. The Digital Cadastral Data Base is current as at September 2019. Copyright The State Government of Queensland 2019. All other data copyright Livingstone Shire Council 2019.








**Overlay Map
OM01-01
Shire
Acid Sulfate Soils
Version 2**





Legend

- Acid Sulfate Soils (ASS)**
-  ASS - Known actual or potential
-  ASS - Potential Assessment Area
- Indicative Contours**
-  5 metres AHD contour
-  20 metres AHD contour
- Other**
-  Cadastre

Note: The ASS - Potential Assessment Area overlay generally indicates areas at or below the 20 metres AHD contour level. Acid Sulfate Soils may or may not be present.

Note: For development located within either of the Acid Sulfate Soils overlays shown on this map, the Tables of Assessment located in Part 5 of the planning scheme must be referred to in order to determine the category of development and the category of assessment (i.e. to determine if there are development requirements or if a development application to Council is required). The Acid Sulfate Soils overlays shown on this map include the ASS - Known actual or potential areas, and the ASS - Potential Assessment Area.

Note: The contours shown on this map are indicative in nature and should be considered as a guide. Contour levels should be determined from a recent survey for the site or from the most recent Council or State Government contour information for the site (if available).

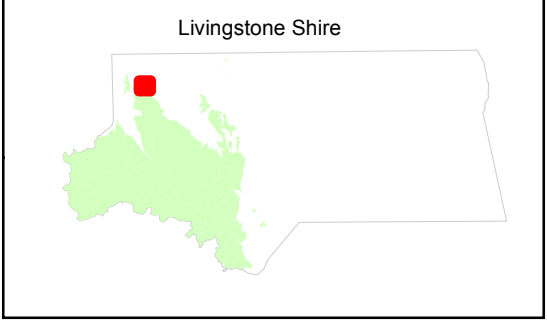
N



Scale @ A3
1:30,000



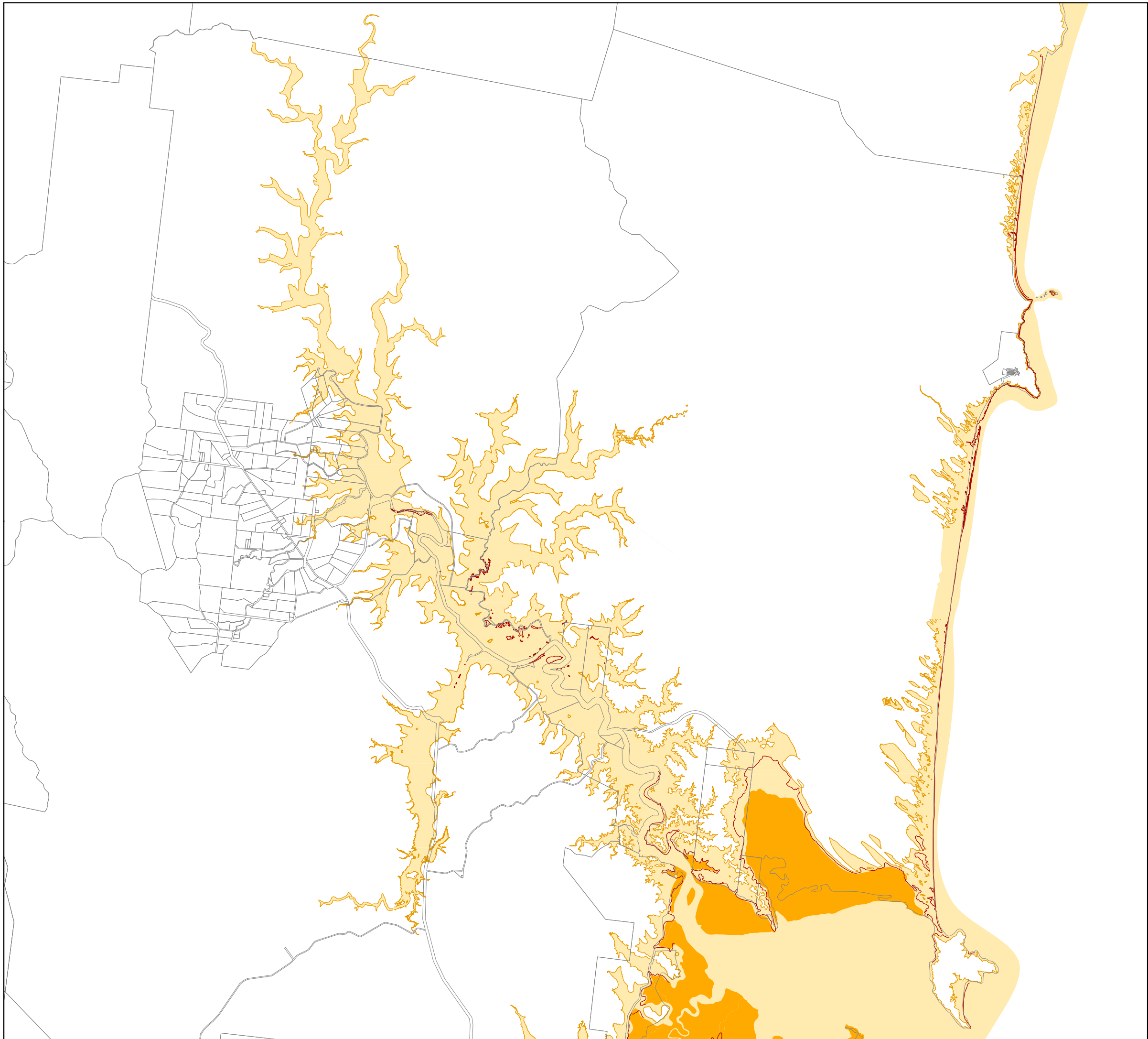
Copyright protects this publication. Reproduction by whatever means is prohibited without prior written permission of the Chief Executive Officer, Livingstone Shire Council. Livingstone Shire Council will not be held liable under any circumstances in connection with or arising out of the use of this data nor does it warrant that the data is error free. Any queries should be directed to the Customer Service Centre, Livingstone Shire Council or telephone 1300 790 919. The Digital Cadastral Data Base is current as at September 2019. Copyright The State Government of Queensland 2019. All other data copyright Livingstone Shire Council 2019.



**Overlay Map
OM01-02
Acid Sulfate Soils**

Version 2





Legend

- Acid Sulfate Soils (ASS)**
 - ASS - Known actual or potential
 - ASS - Potential Assessment Area
- Indicative Contours**
 - 5 metres AHD contour
 - 20 metres AHD contour
- Other**
 - Cadastre

Note: The ASS - Potential Assessment Area overlay generally indicates areas at or below the 20 metres AHD contour level. Acid Sulfate Soils may or may not be present.

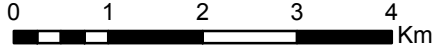
Note: For development located within either of the Acid Sulfate Soils overlays shown on this map, the Tables of Assessment located in Part 5 of the planning scheme must be referred to in order to determine the category of development and the category of assessment (i.e. to determine if there are development requirements or if a development application to Council is required). The Acid Sulfate Soils overlays shown on this map include the ASS - Known actual or potential areas, and the ASS - Potential Assessment Area.

Note: The contours shown on this map are indicative in nature and should be considered as a guide. Contour levels should be determined from a recent survey for the site or from the most recent Council or State Government contour information for the site (if available).

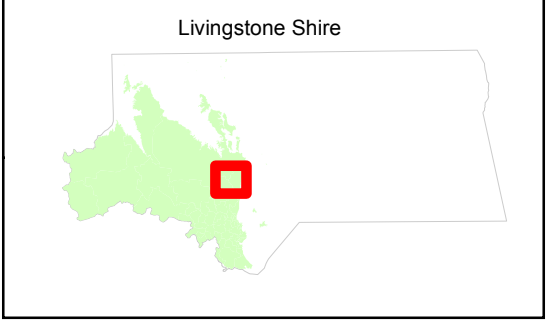
N



Scale @ A3
1:80,000



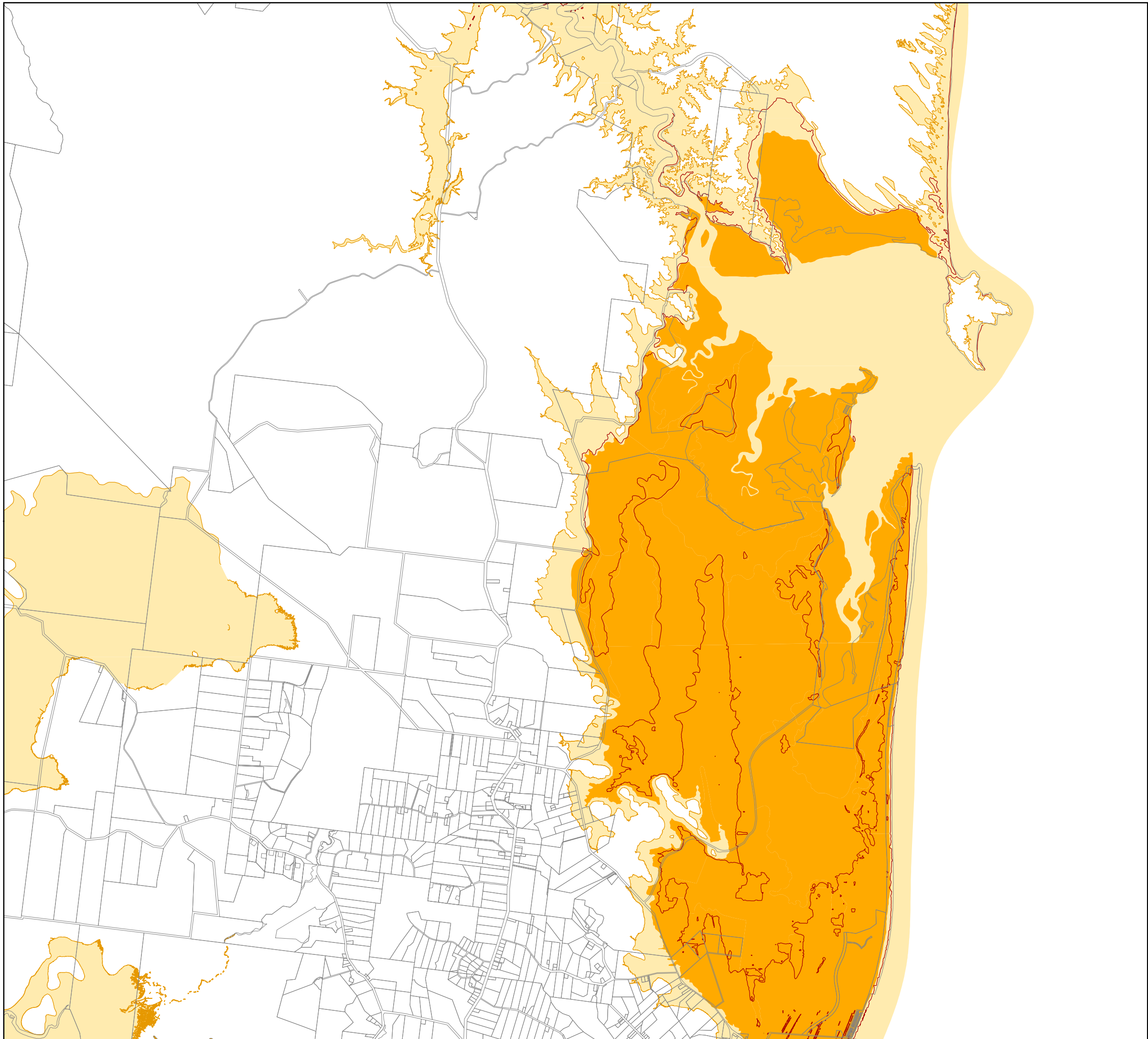
Copyright protects this publication. Reproduction by whatever means is prohibited without prior written permission of the Chief Executive Officer, Livingstone Shire Council. Livingstone Shire Council will not be held liable under any circumstances in connection with or arising out of the use of this data nor does it warrant that the data is error free. Any queries should be directed to the Customer Service Centre, Livingstone Shire Council or telephone 1300 790 919. The Digital Cadastral Data Base is current as at September 2019. Copyright The State Government of Queensland 2019. All other data copyright Livingstone Shire Council 2019.



**Overlay Map
OM01-03
Acid Sulfate Soils**

Version 2





Legend

- Acid Sulfate Soils (ASS)**
- ASS - Known actual or potential
- ASS - Potential Assessment Area
- Indicative Contours**
- 5 metres AHD contour
- 20 metres AHD contour
- Other**
- Cadastre

Note: The ASS - Potential Assessment Area overlay generally indicates areas at or below the 20 metres AHD contour level. Acid Sulfate Soils may or may not be present.

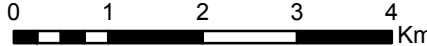
Note: For development located within either of the Acid Sulfate Soils overlays shown on this map, the Tables of Assessment located in Part 5 of the planning scheme must be referred to in order to determine the category of development and the category of assessment (i.e. to determine if there are development requirements or if a development application to Council is required). The Acid Sulfate Soils overlays shown on this map include the ASS - Known actual or potential areas, and the ASS - Potential Assessment Area.

Note: The contours shown on this map are indicative in nature and should be considered as a guide. Contour levels should be determined from a recent survey for the site or from the most recent Council or State Government contour information for the site (if available).

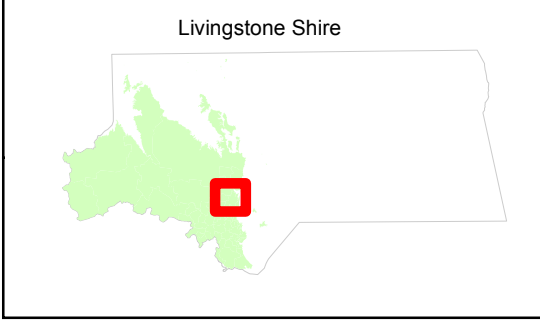
N



Scale @ A3
1:80,000



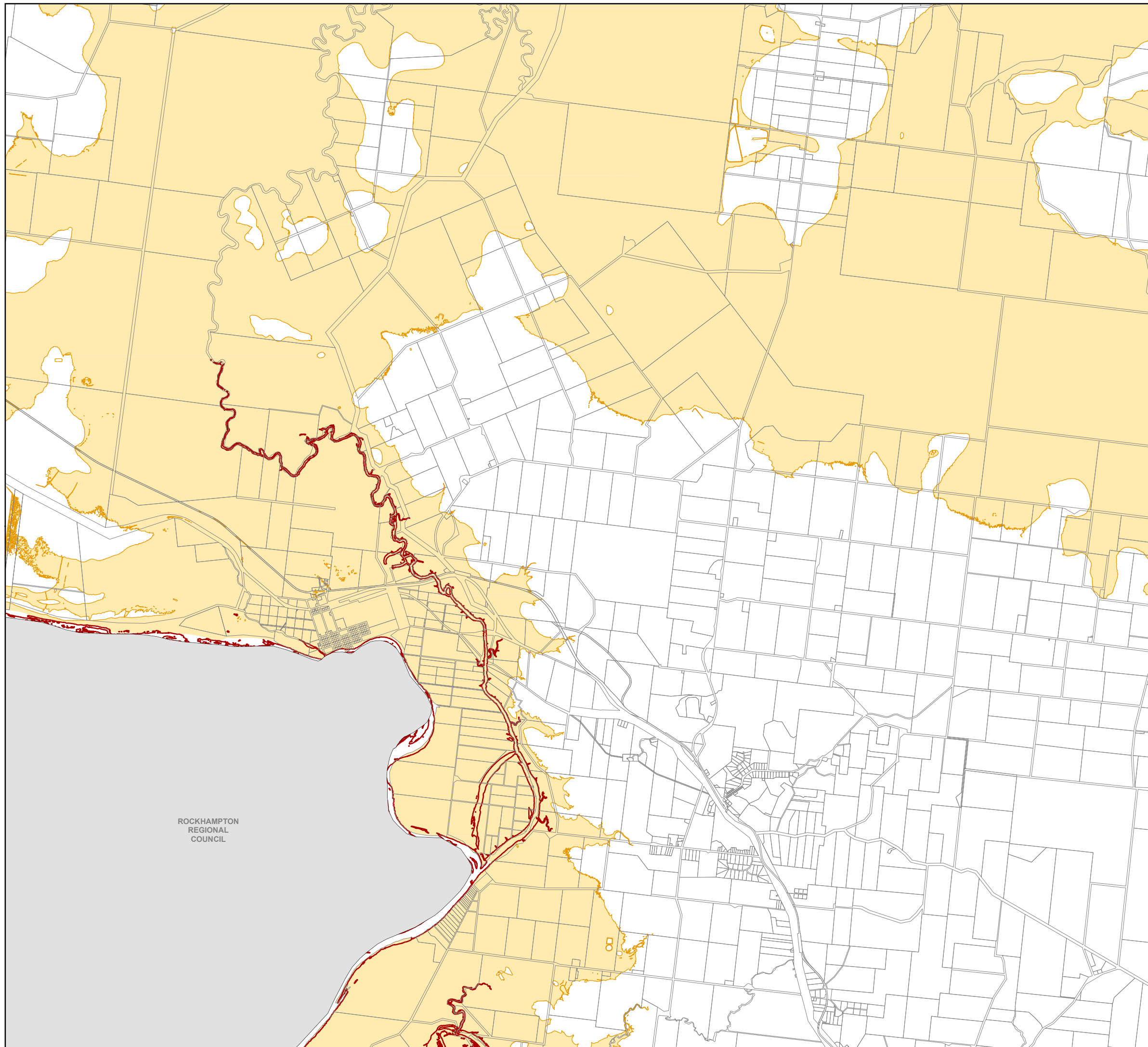
Copyright protects this publication. Reproduction by whatever means is prohibited without prior written permission of the Chief Executive Officer, Livingstone Shire Council. Livingstone Shire Council will not be held liable under any circumstances in connection with or arising out of the use of this data nor does it warrant that the data is error free. Any queries should be directed to the Customer Service Centre, Livingstone Shire Council or telephone 1300 790 919. The Digital Cadastral Data Base is current as at September 2019. Copyright The State Government of Queensland 2019. All other data copyright Livingstone Shire Council 2019.



**Overlay Map
OM01-04
Acid Sulfate Soils**



Version 2







Legend

Acid Sulfate Soils (ASS)

-  ASS - Known actual or potential
-  ASS - Potential Assessment Area

Indicative Contours

-  5 metres AHD contour
-  20 metres AHD contour

Other

-  Cadastre

Note: The ASS - Potential Assessment Area overlay generally indicates areas at or below the 20 metres AHD contour level. Acid Sulfate Soils may or may not be present.

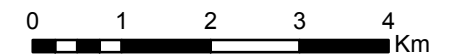
Note: For development located within either of the Acid Sulfate Soils overlays shown on this map, the Tables of Assessment located in Part 5 of the planning scheme must be referred to in order to determine the category of development and the category of assessment (i.e. to determine if there are development requirements or if a development application to Council is required). The Acid Sulfate Soils overlays shown on this map include the ASS - Known actual or potential areas, and the ASS - Potential Assessment Area.

Note: The contours shown on this map are indicative in nature and should be considered as a guide. Contour levels should be determined from a recent survey for the site or from the most recent Council or State Government contour information for the site (if available).

N

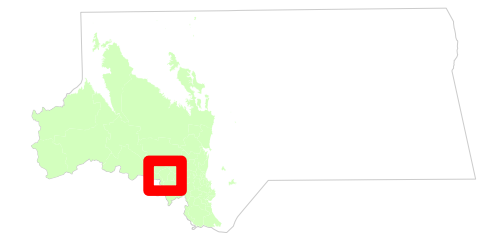


Scale @ A3
1:85,000



Copyright protects this publication. Reproduction by whatever means is prohibited without prior written permission of the Chief Executive Officer, Livingstone Shire Council. Livingstone Shire Council will not be held liable under any circumstances in connection with or arising out of the use of this data nor does it warrant that the data is error free. Any queries should be directed to the Customer Service Centre, Livingstone Shire Council or telephone 1300 790 919. The Digital Cadastral Data Base is current as at September 2019. Copyright The State Government of Queensland 2019. All other data copyright Livingstone Shire Council 2019.

Livingstone Shire

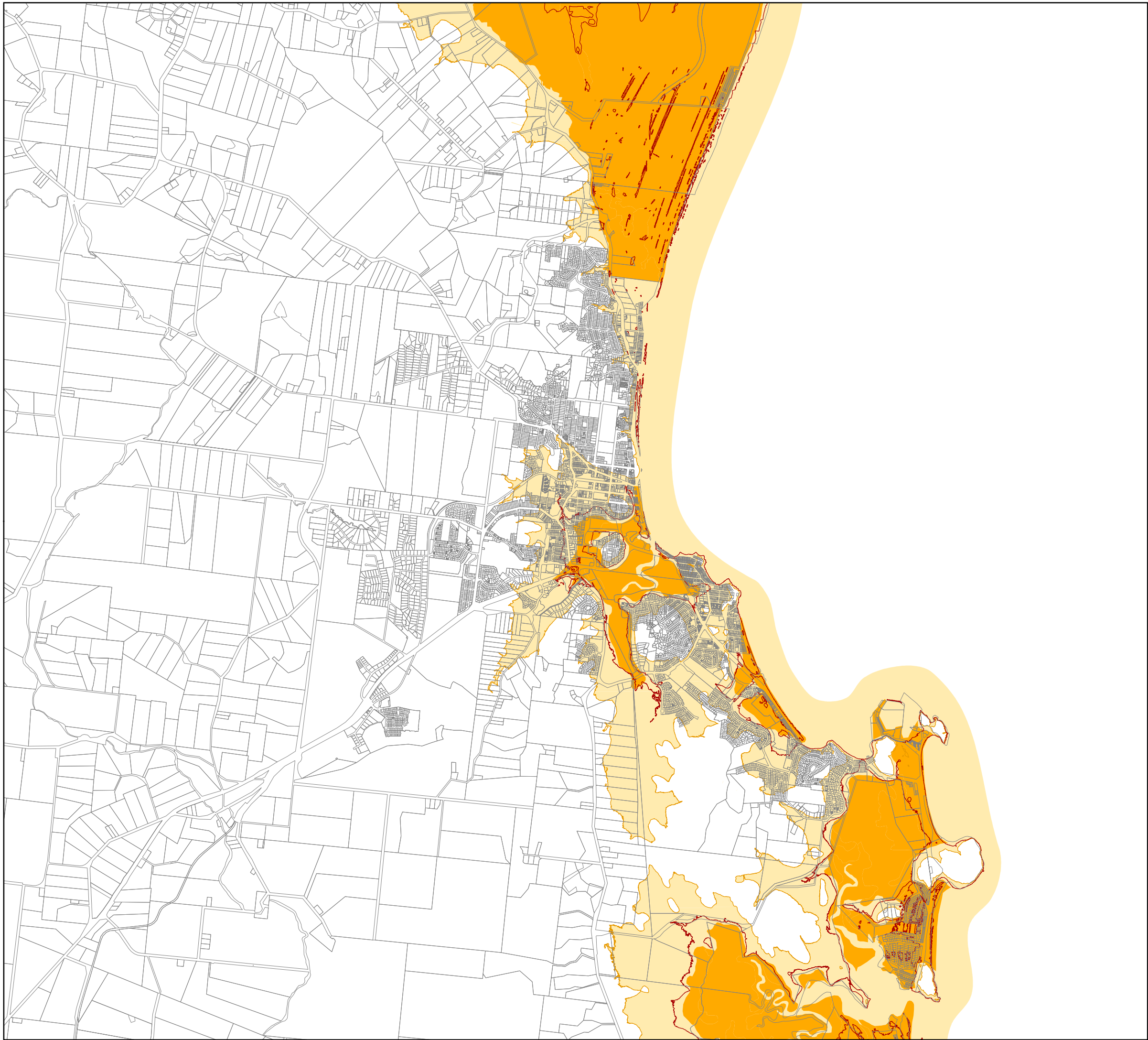


**Overlay Map
OM01-05
Acid Sulfate Soils**






Version 2



LIVINGSTONE PLANNING SCHEME 2018



Legend

- Acid Sulfate Soils (ASS)**
 -  ASS - Known actual or potential
 -  ASS - Potential Assessment Area
- Indicative Contours**
 -  5 metres AHD contour
 -  20 metres AHD contour
- Other**
 -  Cadastre

Note: The ASS - Potential Assessment Area overlay generally indicates areas at or below the 20 metres AHD contour level. Acid Sulfate Soils may or may not be present.

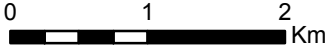
Note: For development located within either of the Acid Sulfate Soils overlays shown on this map, the Tables of Assessment located in Part 5 of the planning scheme must be referred to in order to determine the category of development and the category of assessment (i.e. to determine if there are development requirements or if a development application to Council is required). The Acid Sulfate Soils overlays shown on this map include the ASS - Known actual or potential areas, and the ASS - Potential Assessment Area.

Note: The contours shown on this map are indicative in nature and should be considered as a guide. Contour levels should be determined from a recent survey for the site or from the most recent Council or State Government contour information for the site (if available).

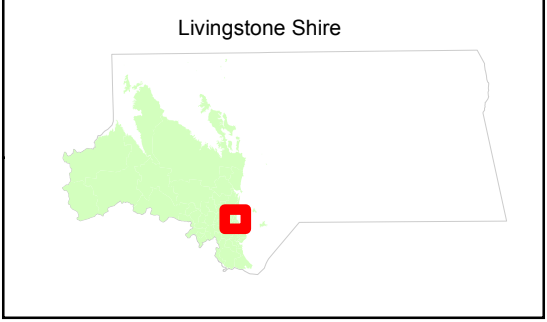
N



Scale @ A3
1:55,000



Copyright protects this publication. Reproduction by whatever means is prohibited without prior written permission of the Chief Executive Officer, Livingstone Shire Council. Livingstone Shire Council will not be held liable under any circumstances in connection with or arising out of the use of this data nor does it warrant that the data is error free. Any queries should be directed to the Customer Service Centre, Livingstone Shire Council or telephone 1300 790 919. The Digital Cadastral Data Base is current as at September 2019. Copyright The State Government of Queensland 2019. All other data copyright Livingstone Shire Council 2019.



**Overlay Map
OM01-06
Acid Sulfate Soils**

Version 2





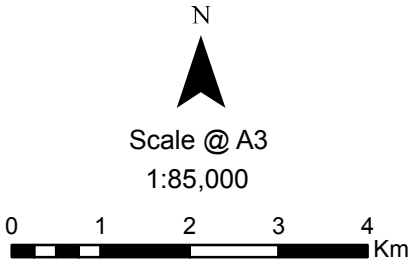
Legend

- Acid Sulfate Soils (ASS)**
- ASS - Known actual or potential
 - ASS - Potential Assessment Area
- Indicative Contours**
- 5 metres AHD contour
 - 20 metres AHD contour
- Other**
- Cadastre

Note: The ASS - Potential Assessment Area overlay generally indicates areas at or below the 20 metres AHD contour level. Acid Sulfate Soils may or may not be present.

Note: For development located within either of the Acid Sulfate Soils overlays shown on this map, the Tables of Assessment located in Part 5 of the planning scheme must be referred to in order to determine the category of development and the category of assessment (i.e. to determine if there are development requirements or if a development application to Council is required). The Acid Sulfate Soils overlays shown on this map include the ASS - Known actual or potential areas, and the ASS - Potential Assessment Area.

Note: The contours shown on this map are indicative in nature and should be considered as a guide. Contour levels should be determined from a recent survey for the site or from the most recent Council or State Government contour information for the site (if available).



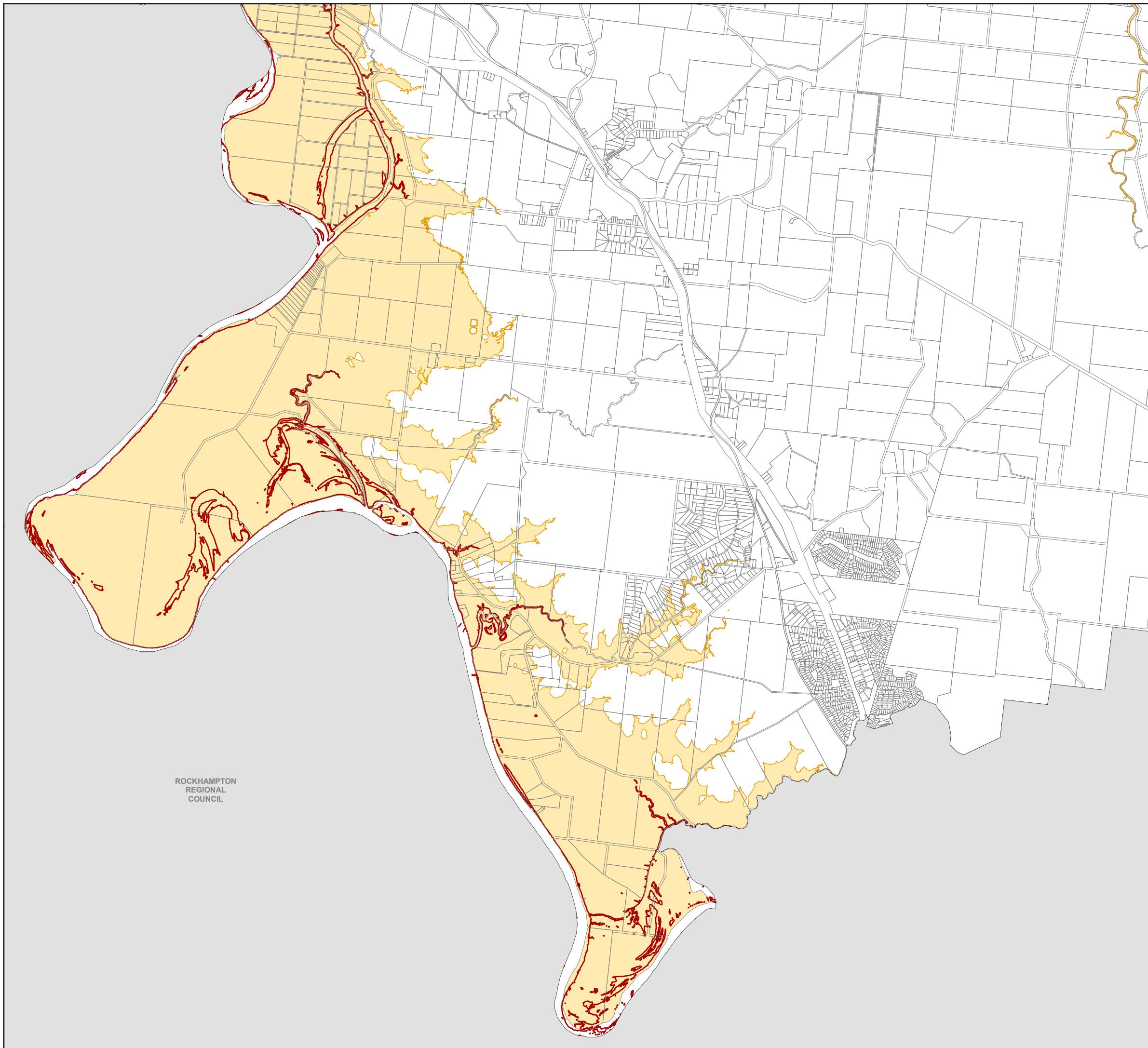
Copyright protects this publication. Reproduction by whatever means is prohibited without prior written permission of the Chief Executive Officer, Livingstone Shire Council. Livingstone Shire Council will not be held liable under any circumstances in connection with or arising out of the use of this data nor does it warrant that the data is error free. Any queries should be directed to the Customer Service Centre, Livingstone Shire Council or telephone 1300 790 919. The Digital Cadastral Data Base is current as at September 2019. Copyright The State Government of Queensland 2019. All other data copyright Livingstone Shire Council 2019.



**Overlay Map
OM01-07
Acid Sulfate Soils**

Version 2









ROCKHAMPTON
REGIONAL
COUNCIL

Legend

Acid Sulfate Soils (ASS)

-  ASS - Known actual or potential
-  ASS - Potential Assessment Area

Indicative Contours

-  5 metres AHD contour
-  20 metres AHD contour

Other

-  Cadastre

Note: The ASS - Potential Assessment Area overlay generally indicates areas at or below the 20 metres AHD contour level. Acid Sulfate Soils may or may not be present.

Note: For development located within either of the Acid Sulfate Soils overlays shown on this map, the Tables of Assessment located in Part 5 of the planning scheme must be referred to in order to determine the category of development and the category of assessment (i.e. to determine if there are development requirements or if a development application to Council is required). The Acid Sulfate Soils overlays shown on this map include the ASS - Known actual or potential areas, and the ASS - Potential Assessment Area.

Note: The contours shown on this map are indicative in nature and should be considered as a guide. Contour levels should be determined from a recent survey for the site or from the most recent Council or State Government contour information for the site (if available).

N

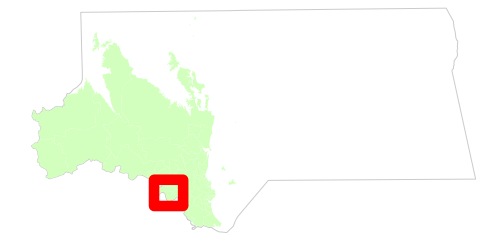


Scale @ A3
1:75,000



Copyright protects this publication. Reproduction by whatever means is prohibited without prior written permission of the Chief Executive Officer, Livingstone Shire Council. Livingstone Shire Council will not be held liable under any circumstances in connection with or arising out of the use of this data nor does it warrant that the data is error free. Any queries should be directed to the Customer Service Centre, Livingstone Shire Council or telephone 1300 790 919. The Digital Cadastral Data Base is current as at September 2019. Copyright The State Government of Queensland 2019. All other data copyright Livingstone Shire Council 2019.

Livingstone Shire

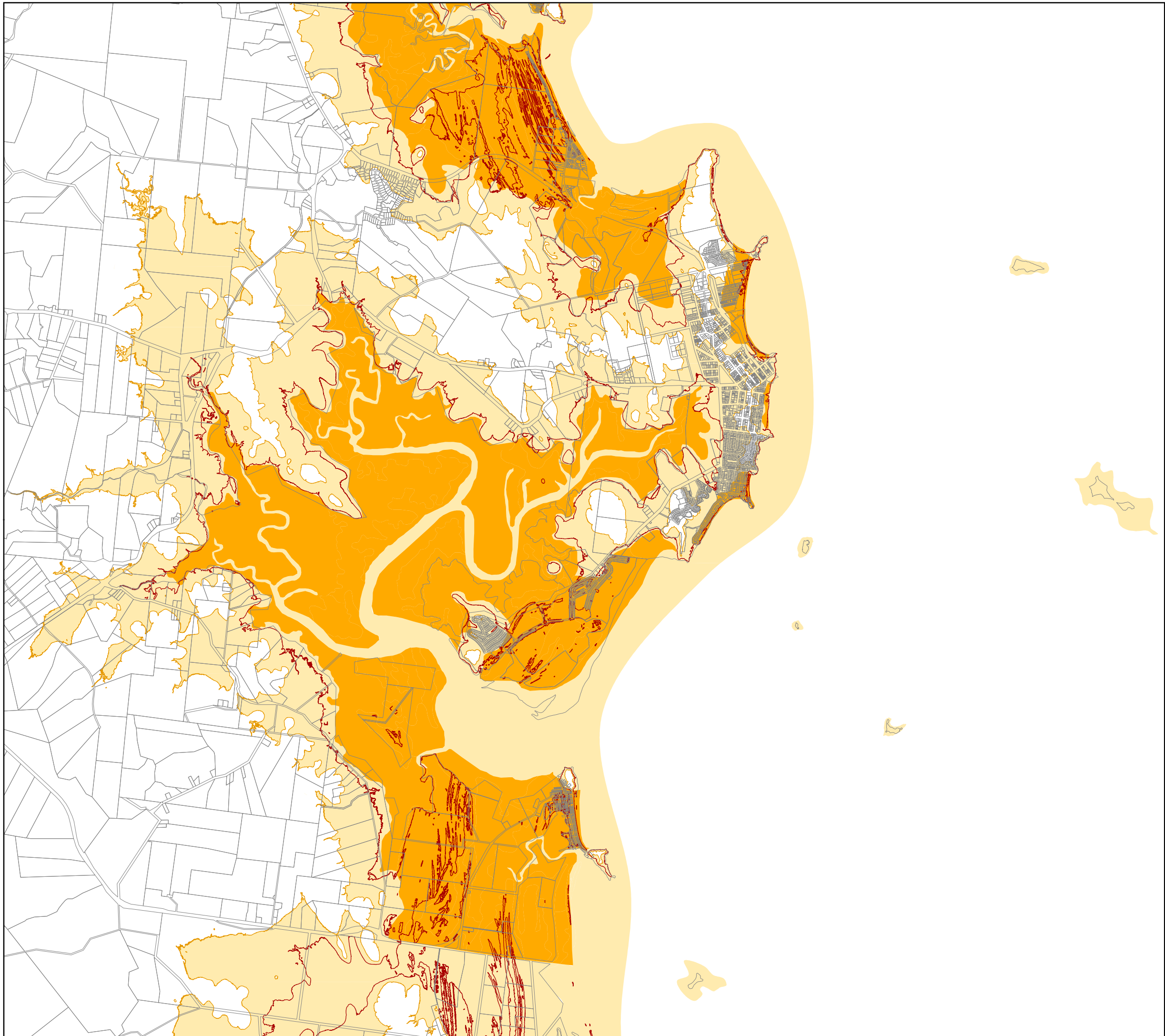


Overlay Map OM01-08 Acid Sulfate Soils

Version 2



LIVINGSTONE PLANNING SCHEME 2018



Legend

- Acid Sulfate Soils (ASS)**
 - ASS - Known actual or potential
 - ASS - Potential Assessment Area
- Indicative Contours**
 - 5 metres AHD contour
 - 20 metres AHD contour
- Other**
 - Cadastre

Note: The ASS - Potential Assessment Area overlay generally indicates areas at or below the 20 metres AHD contour level. Acid Sulfate Soils may or may not be present.

Note: For development located within either of the Acid Sulfate Soils overlays shown on this map, the Tables of Assessment located in Part 5 of the planning scheme must be referred to in order to determine the category of development and the category of assessment (i.e. to determine if there are development requirements or if a development application to Council is required). The Acid Sulfate Soils overlays shown on this map include the ASS - Known actual or potential areas, and the ASS - Potential Assessment Area.

Note: The contours shown on this map are indicative in nature and should be considered as a guide. Contour levels should be determined from a recent survey for the site or from the most recent Council or State Government contour information for the site (if available).

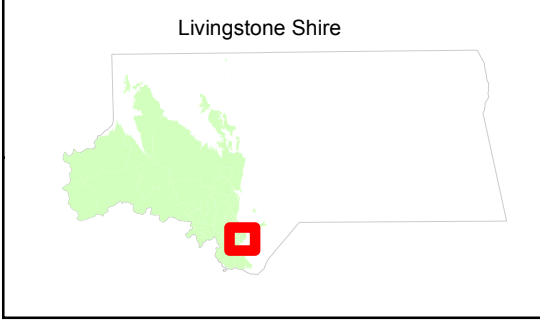
N



Scale @ A3
1:65,000



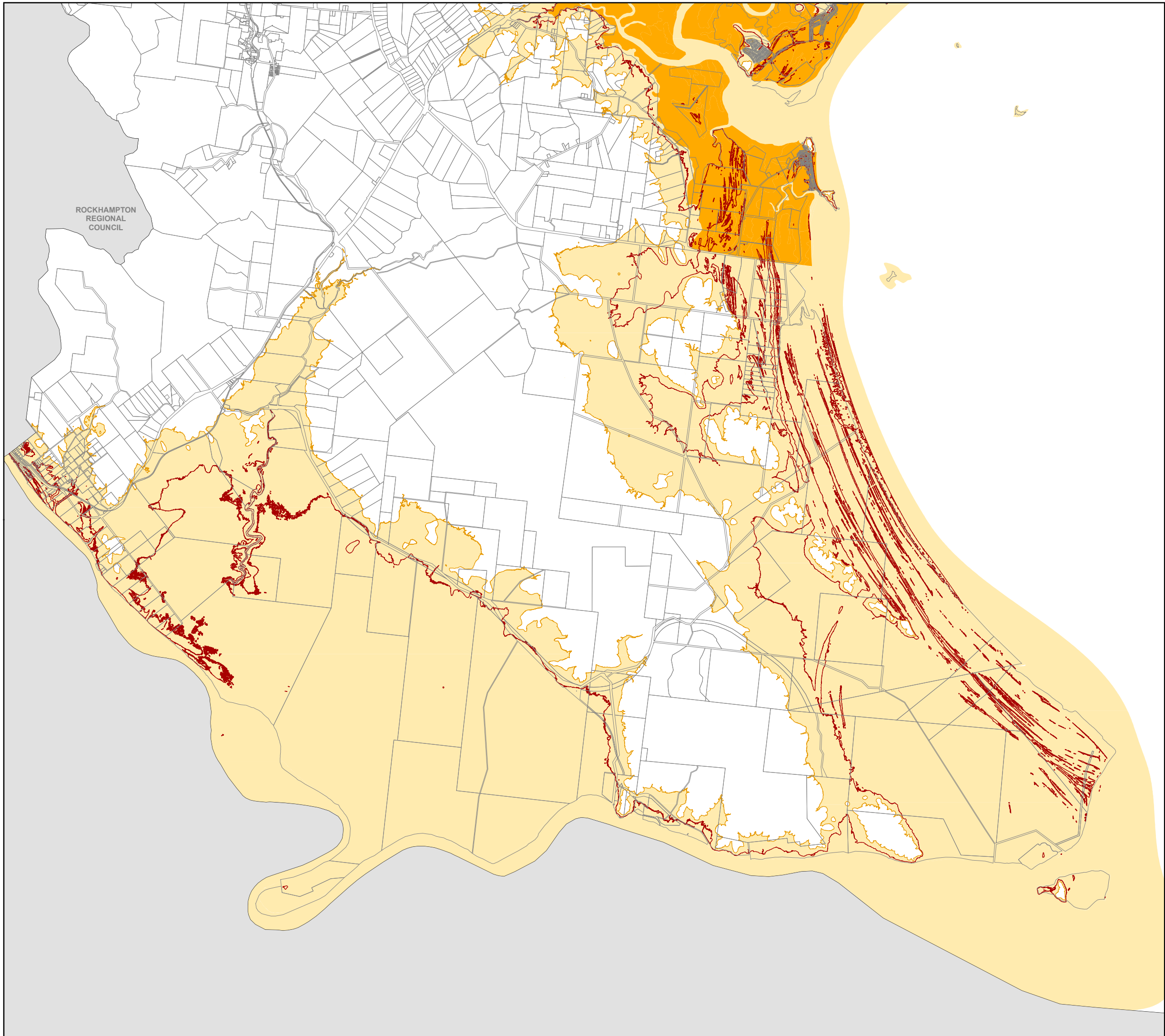
Copyright protects this publication. Reproduction by whatever means is prohibited without prior written permission of the Chief Executive Officer, Livingstone Shire Council. Livingstone Shire Council will not be held liable under any circumstances in connection with or arising out of the use of this data nor does it warrant that the data is error free. Any queries should be directed to the Customer Service Centre, Livingstone Shire Council or telephone 1300 790 919. The Digital Cadastral Data Base is current as at September 2019. Copyright The State Government of Queensland 2019. All other data copyright Livingstone Shire Council 2019.



**Overlay Map
OM01-09
Acid Sulfate Soils**

Version 2





Legend

Acid Sulfate Soils (ASS)

- ASS - Known actual or potential
- ASS - Potential Assessment Area

Indicative Contours

- 5 metres AHD contour
- 20 metres AHD contour

Other

- Cadastre

Note: The ASS - Potential Assessment Area overlay generally indicates areas at or below the 20 metres AHD contour level. Acid Sulfate Soils may or may not be present.

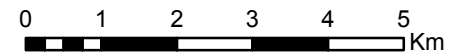
Note: For development located within either of the Acid Sulfate Soils overlays shown on this map, the Tables of Assessment located in Part 5 of the planning scheme must be referred to in order to determine the category of development and the category of assessment (i.e. to determine if there are development requirements or if a development application to Council is required). The Acid Sulfate Soils overlays shown on this map include the ASS - Known actual or potential areas, and the ASS - Potential Assessment Area.

Note: The contours shown on this map are indicative in nature and should be considered as a guide. Contour levels should be determined from a recent survey for the site or from the most recent Council or State Government contour information for the site (if available).

N

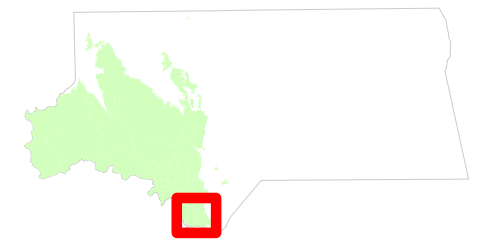


Scale @ A3
1:100,000



Copyright protects this publication. Reproduction by whatever means is prohibited without prior written permission of the Chief Executive Officer, Livingstone Shire Council. Livingstone Shire Council will not be held liable under any circumstances in connection with or arising out of the use of this data nor does it warrant that the data is error free. Any queries should be directed to the Customer Service Centre, Livingstone Shire Council or telephone 1300 790 919. The Digital Cadastral Data Base is current as at September 2019. Copyright The State Government of Queensland 2019. All other data copyright Livingstone Shire Council 2019.

Livingstone Shire



Overlay Map OM01-10 Acid Sulfate Soils

Version 2



LIVINGSTONE PLANNING SCHEME 2018