

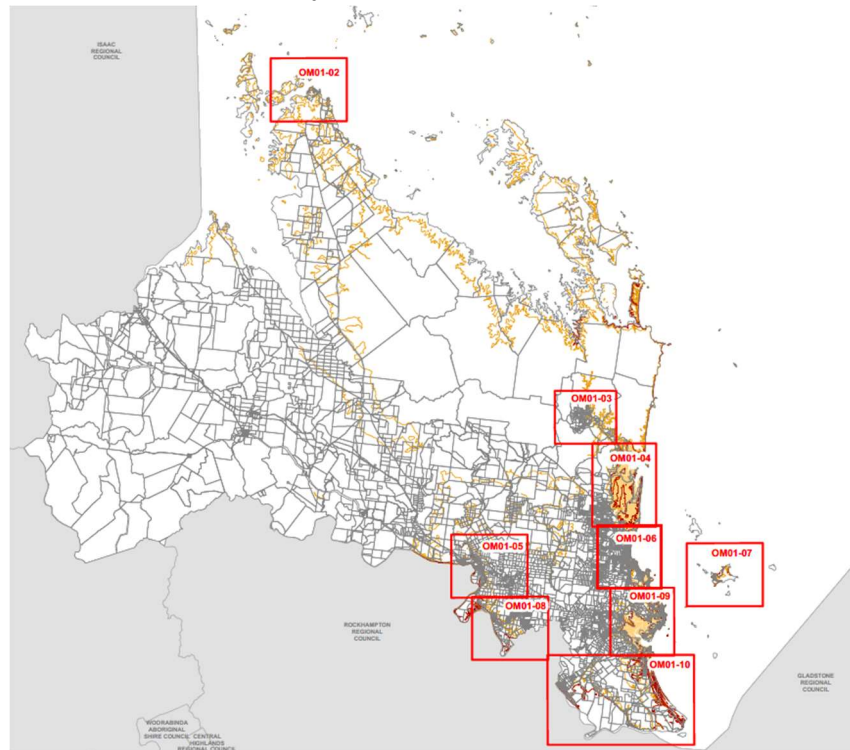
Summary of Package 3 Overlay Map Major Amendments

Amendment Item 3.14

Amendment to the acid sulfate soils series of overlay maps. The amendment involves inclusion of a new overlay which covers land generally between 5 metres AHD and 20 metres AHD. The new overlay is consistent with the State Planning Policy, which applies to all land below 20 metres AHD. The overlay does not categorise development as assessable by itself, but rather it identifies areas where a development application may be required. The Tables of Assessment in Part 5 of the planning scheme determine whether or not there are development requirements with regard to acid sulfate soils.

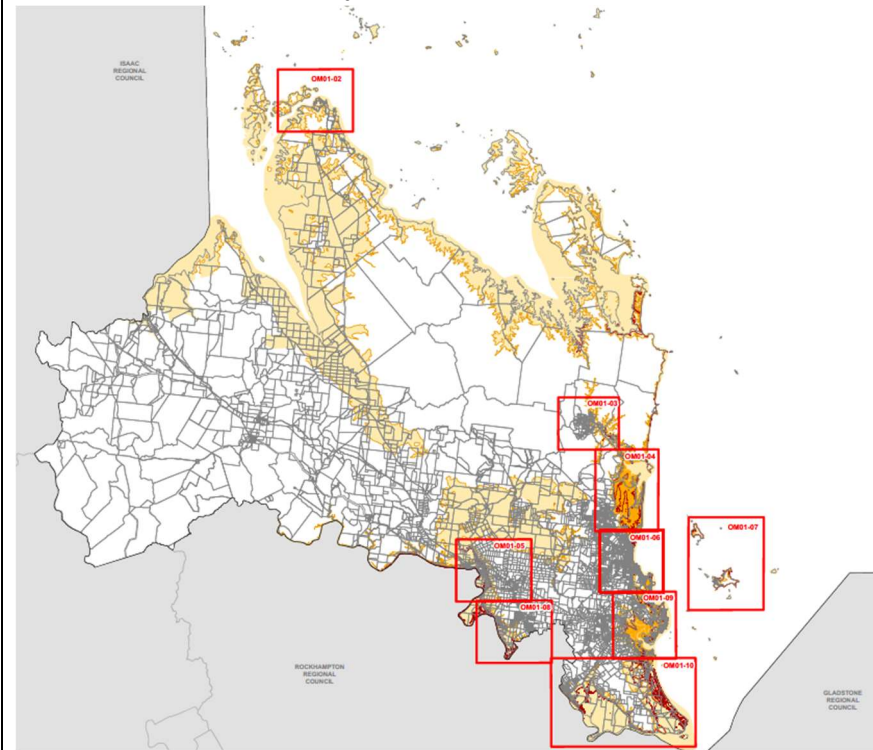
The following images are only a selection from the complete series of amended overlay maps. The selected extracts illustrate the amendments that have been made.

Extract: Current Overlay Map OM01-01



The following images are only a selection from the complete series of amended overlay maps. The selected extracts illustrate the amendments that have been made.

Extract: Amended Overlay Map OM01-01

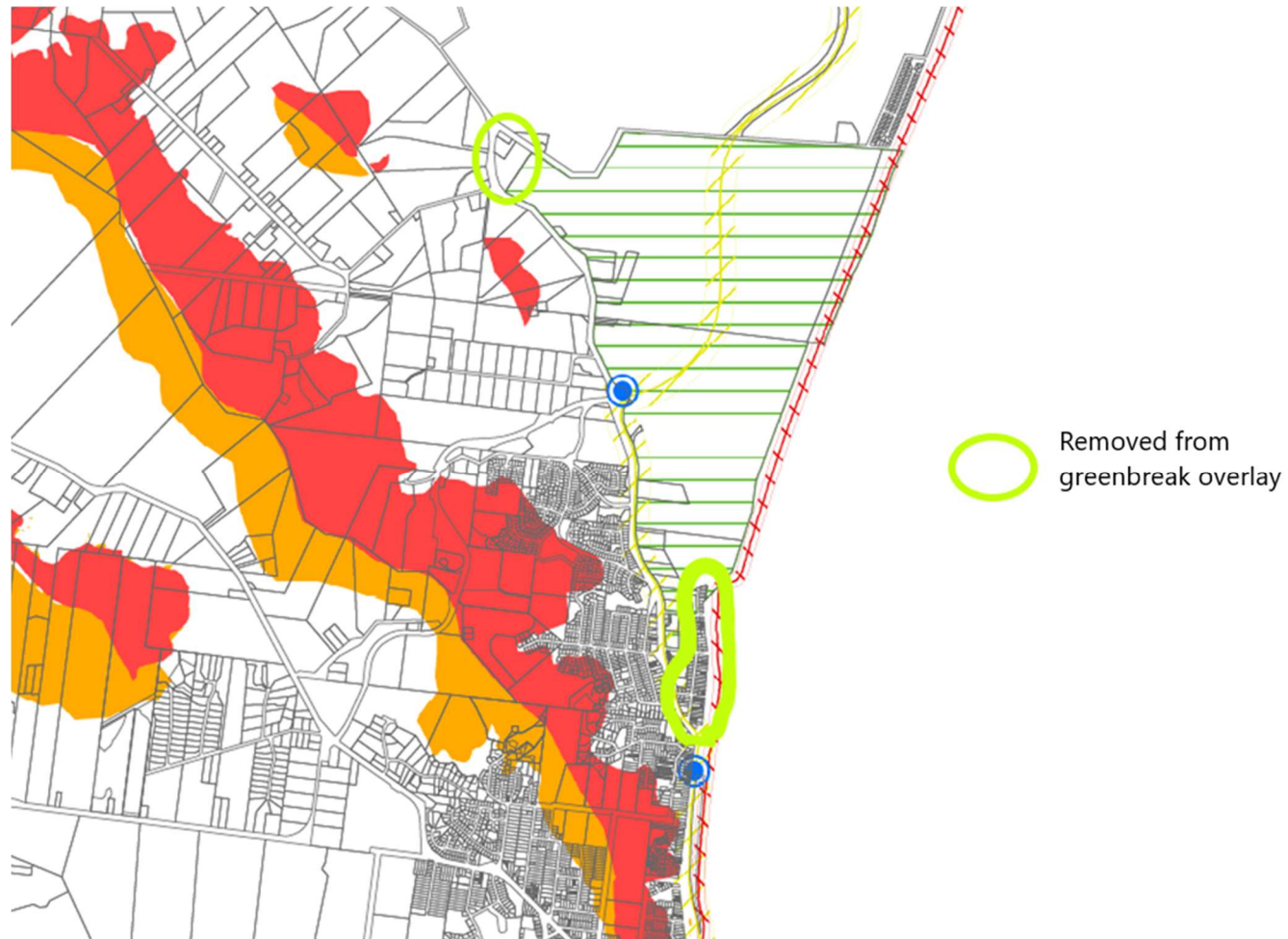




Amendment Item 3.15

Amendment to the Scenic Amenity series of overlay maps. The amendment is to the Greenbreak Overlay as per the specific details in Attachment 1 Proposed Amendment Item 3.15 for the Package 3 amendments.

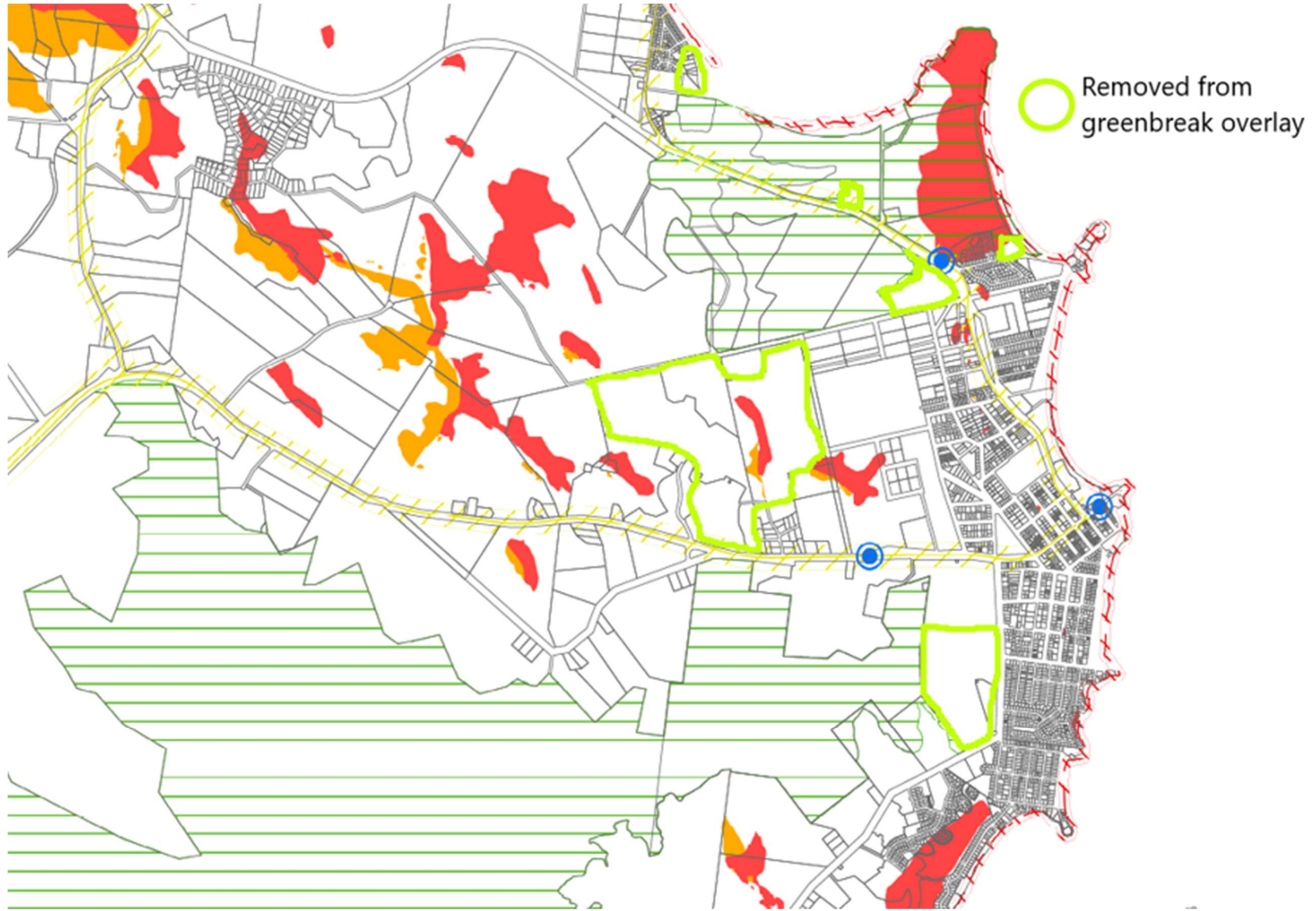
Extract: Amended Overlay Map OM21-04



Extract: Amended Overlay Map OM21-04



Extract: Amended Overlay Map OM21-05



Amendment Item 3.16

Addition of a new overlay and map for building height limits. The new overlay applies to all land in the planning scheme area. The overlay does not categorise development as assessable by itself, but rather it identifies areas where a development application may be required if specific height limits are exceeded. The Tables of Assessment in Part 5 of the planning scheme categorise whether or not development is assessable if building height limits are exceeded in specific zones.

Extract: Overlay Map OM-27-01

