

Livingstone Shire  
Council



# REEF GUARDIAN COUNCIL ACTION PLAN



reef guardian council



## Reef Guardian Council program

The Reef Guardian Council program (RGC program) is a collaborative stewardship arrangement between local government in the Great Barrier Reef catchment and the Authority, which recognises that local and regional approaches are central to protecting and managing the Reef and the communities it supports.

The RGC program was first launched in 2007 and in 2020 has grown to include 18 member councils covering an area of 300 000 square kilometres and a population of more than one million people.

Whether Reef Guardian Councils and their communities are large or small, they are making continuous improvements to help the Reef.

## Action plans

This Action Plan records the diversity of council actions and projects that contribute to Reef health. It aligns with Queensland and Australian Government objectives to improve the long-term outlook for the Reef.

Actions are scalable reflecting each council's financial and technical capacities. To be a member, councils with a population of less than 50,000 residents must commit to at least one action for each item (climate change, coastal development, land-based run-off, direct use, heritage values), while councils with greater than 50,000 residents must commit to at least three actions per item. Examples of actions are provided in Table 1 of the Reef Guardian Council program Terms of Reference, however the program empowers councils to drive change and deliver innovative solutions to help the Reef by identifying other actions beyond those provided.

## Endorsement

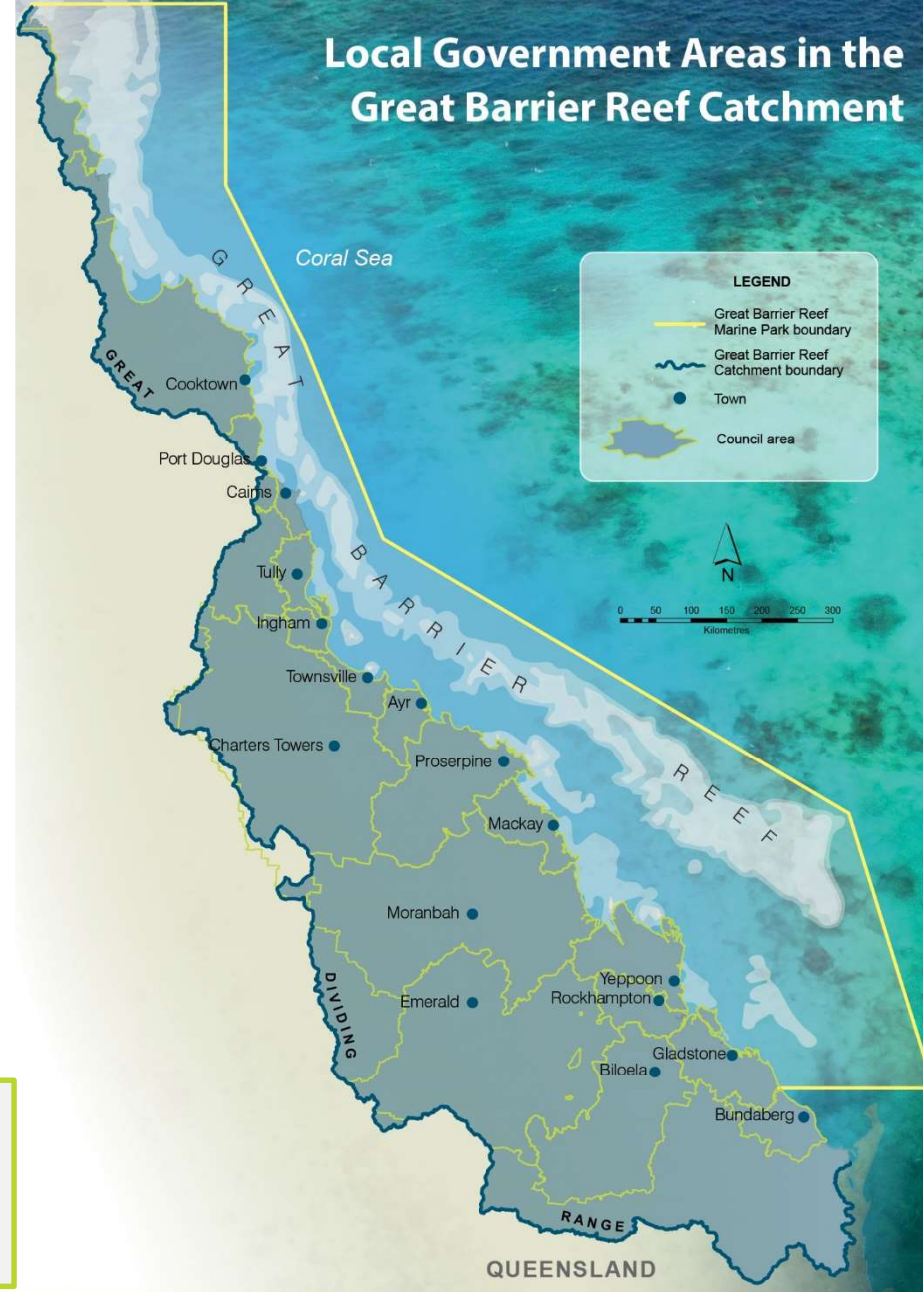
The council recognises the importance of the Reef Guardian partnership and values the contributions made by staff and the community 'working together today for a healthier Reef tomorrow'.

Period of Action Plan: ...2023-2026.....

Endorsed: .......... 22 06 23

Council signatory

## Local Government Areas in the Great Barrier Reef Catchment



## Climate change

Action	Description	Financial/Resource Commitment	Partnerships	Responsible department/position	Project Status	Link to Reef 2050 Plan
Implement <i>Low Carbon Livingstone 2030: A strategy to reduce Livingstone Shire Council's carbon footprint</i>	A plan for Council to reduce its carbon footprint by 30% (based on current inventory) by 2030 through a suite of renewable energy, energy efficiency, behavioural change and carbon offset focused projects, programmes and initiatives.	LSC In-Kind. Funding or budgets to be sourced for individual projects, programmes or initiatives.	N/A	Sustainability	Strategy being implemented with a focus on a carbon audit on Council's operations; transport efficiencies and infrastructure; waste management and infrastructure, street lighting retrofit program; and education and awareness raising.	<b>Goal:</b> Australia contributes to an effective global response to climate change through the Paris Agreement, to hold the increase in the global average temperature to well below 2°C above pre-industrial levels and pursue efforts to limit the temperature increase to 1.5°C above preindustrial levels <b>Strategic Action 1.1</b> Contribute to global efforts to reduce greenhouse gas emissions
Membership of Queensland Climate Resilient Councils programme	The Queensland Climate Resilient Councils program assists Queensland local governments to strengthen internal council decision-making capabilities to plan for and respond to the challenges and opportunities arising from climate change.	LSC In-Kind	Local Government Association of Queensland, Department of Environment and Science	Sustainability	Ongoing	<b>Goal:</b> Australia contributes to an effective global response to climate change through the Paris Agreement, to hold the increase in the global average temperature to well

						below 2°C above pre-industrial levels and pursue efforts to limit the temperature increase to 1.5°C above preindustrial levels <b>Strategic Action 1.2</b> Foster partnerships and stewardship for climate mitigation
Membership of Cities Power Partnership	The Cities Power Partnership brings together local governments from around the country to accelerate Australia's transition to a renewable energy future. Members are required to pledge to take five key actions across renewable energy, energy efficiency, sustainable transport and working together.	LSC In-Kind	Australian Climate Council	Sustainability	Ongoing	<b>Goal:</b> Australia contributes to an effective global response to climate change through the Paris Agreement, to hold the increase in the global average temperature to well below 2°C above pre-industrial levels and pursue efforts to limit the temperature increase to 1.5°C above preindustrial levels <b>Strategic Action 1.2</b> Foster partnerships and stewardship for climate mitigation
Street light replacement programme	Ongoing replacement of Council controlled halogen street lights with LED/Solar	LSC Budget	N/A	Infrastructure	Ongoing	<b>Goal:</b> Australia contributes to an effective global response to climate

						<p>change through the Paris Agreement, to hold the increase in the global average temperature to well below 2°C above pre-industrial levels and pursue efforts to limit the temperature increase to 1.5°C above preindustrial levels</p> <p><b>Strategic Action 1.1</b> Contribute to global efforts to reduce greenhouse gas emissions</p>
E-scooter Trial	<p>Trial of electric scooters in Yeppoon to allow an assessment of their viability in the region. E-scooters can assist in reducing congestion and carbon emissions while boosting the local economy.</p>	LSC Budget/LSC In-Kind	Nueron Mobility	Economic Development	Continuing until late 2023	<p><b>Goal:</b> Australia contributes to an effective global response to climate change through the Paris Agreement, to hold the increase in the global average temperature to well below 2°C above pre-industrial levels and pursue efforts to limit the temperature increase to 1.5°C above preindustrial levels</p> <p><b>Strategic Action 1.1</b> Contribute to global efforts to</p>

						reduce greenhouse gas emissions
Electric Vehicles	Advocate for the installation of charging infrastructure at business premises. Investigate the opportunity to have charging stations on public land.	LSC In-kind/Private Investment/External Funding	Private Industry	Economic Development	Ongoing	<p><b>Goal:</b> Australia contributes to an effective global response to climate change through the Paris Agreement, to hold the increase in the global average temperature to well below 2°C above pre-industrial levels and pursue efforts to limit the temperature increase to 1.5°C above preindustrial levels</p> <p><b>Strategic Action 1.1</b> Contribute to global efforts to reduce greenhouse gas emissions</p>

### Future projects wish list

Project Name	Description	Financial / Resource Requirements	Link to Reef 2050 Plan
Landfill Gas Capture/Flaring	Develop a market process to monitor and flare or capture landfill gas with the opportunities to qualify for ACC (Australia Carbon Credits)	No-cost option with all rights to gas going to provider (including ACC) with LSC In-Kind required <u>OR</u> over \$1 million to test for gas and install engine to capture/flare gas with rights to gas and ACC which will require LSC Budget and/or external funding when available.	<p><b>Goal:</b> Australia contributes to an effective global response to climate change through the Paris Agreement, to hold the increase in the global average temperature to well below 2°C above pre-industrial levels and pursue efforts to limit the temperature increase to 1.5°C above preindustrial levels</p>

			<b>Strategic Action 1.1</b> Contribute to global efforts to reduce greenhouse gas emissions
Solar Panel and Battery Unit Retrofit Program	Retrofitting of existing Council buildings/facilities with solar panels and battery units.	External Funding when available	<b>Goal:</b> Australia contributes to an effective global response to climate change through the Paris Agreement, to hold the increase in the global average temperature to well below 2°C above pre-industrial levels and pursue efforts to limit the temperature increase to 1.5°C above preindustrial levels <b>Strategic Action 1.1</b> Contribute to global efforts to reduce greenhouse gas emissions
Fleet and Plant sustainability	Audit of Councils Fleet and Plant to determine fit for purpose vehicles. Look at opportunities to incorporate more hybrid, bio-fuel and electric vehicles into the fleet.	LSC Budget	<b>Goal:</b> Australia contributes to an effective global response to climate change through the Paris Agreement, to hold the increase in the global average temperature to well below 2°C above pre-industrial levels and pursue efforts to limit the temperature increase to 1.5°C above preindustrial levels <b>Strategic Action 1.1</b> Contribute to global efforts to reduce greenhouse gas emissions
Carbon Economy Transition	Development of an Economic Transition Roadmap to inform and guide Council on what is required to support the region to successfully adapt to a changing energy sector over the next decade, alongside other levels of government and industry.	External Funding when available	<b>Goal:</b> Australia contributes to an effective global response to climate change through the Paris Agreement, to hold the increase in the global average temperature to well below 2°C above pre-industrial levels and pursue efforts to limit the temperature increase to 1.5°C above preindustrial levels <b>Strategic Action 1.2</b> Foster partnerships and stewardship for climate mitigation <b>Goal:</b> The capacity of Reef communities, Traditional Custodians

			and industries to adapt to a changing climate is increased <b>Strategic Action 1.3</b> Improve information and planning for community and industry climate adaptation <b>Strategic Action 1.4</b> Build community and industry capacity and capability to adapt to climate change
Organisational Carbon Risk Strategy	Develop a climate risk framework/strategy for LSC as per the Climate Risk Management Framework for Queensland Local Government.	External Funding when available	<b>Goal:</b> The capacity of Reef communities, Traditional Custodians and industries to adapt to a changing climate is increased <b>Strategic Action 1.3</b> Improve information and planning for community and industry climate adaptation <b>Strategic Action 1.4</b> Build community and industry capacity and capability to adapt to climate change
Carbon Farming	Develop and support projects which sequester carbon through soil and/or vegetation storage and which are eligible for ACC (Australian Carbon Credits).	External Funding when available	<b>Goal:</b> Australia contributes to an effective global response to climate change through the Paris Agreement, to hold the increase in the global average temperature to well below 2°C above pre-industrial levels and pursue efforts to limit the temperature increase to 1.5°C above preindustrial levels <b>Strategic Action 1.2</b> Foster partnerships and stewardship for climate mitigation



## Coastal development

Action	Description	Financial/Resource Commitment	Partnerships	Responsible department/position	Project Status	Link to Reef 2050 Plan
Beach Clean Ups and Source Reduction Identification	Support various beach clean-up and source reduction events throughout the year. This includes: Clean Up Australia Day, biennial Nine Mile Beach event, Great Northern Clean Up and others.	LSC Budget and In-Kind	Capricornia Catchments, Tangaroa Blue, Capricorn Coast Landcare Fitzroy Basin Association	Sustainability, Natural Resource Management	Ongoing	<b>Goal:</b> Marine debris, rubbish pollution and at-sea disposal of waste is reduced <b>Strategic Action 3.9</b> Implement domestic measures that reduce marine debris and manage waste disposal
Marine Turtle Habitat Protection	Project to protect habitat of marine turtles along the Capricorn Coast foreshore, chiefly through eradication of pest predators (foxes), enhancing vegetation in foreshore areas adjacent to nesting and breeding sites, erecting signage and turtle friendly lighting and educating the community.	LSC Budget	Fitzroy Basin Association, Department of Environment and Science	Natural Resource Management	Ongoing	<b>Goal:</b> Lighting and recreational impacts on sensitive shoreline ecosystems and cultural sites are reduced <b>Strategic Action 2.3</b> Improve practices in sensitive shoreline ecosystems. <b>Goal:</b> Outbreaks of pests,

						introduced species and disease are reduced <b>Strategic Action 5.1</b> Strengthen strategic management of established pests, introduced species and disease
Coastal rehabilitation	Ongoing community based coastal rehabilitation activities which include: revegetation, weed removal, dunal management along key beaches including: Farnborough, Kemp, Kinka, Mulambin, Lammermoor, Emu Park.	LSC Budget	Friends of the Beach	Natural Resource Management	Ongoing	<b>Goal:</b> Key habitats are being actively rehabilitated or restored <b>Strategic Action 5.3</b> Enhance protection, rehabilitation and restoration of key coastal and catchment ecosystems
Coastal Hazards Adaptation	Implementation of Our Living Coast Strategy and collaboration with internal and external stakeholders to build coastal resilience and reduce risk from future coastal hazards.	External Funding when available	Livingstone Community	Natural Resource Management	Ongoing with current focus on: community engagement/events, maintenance of CoastSnap points at key sites, development of funding opportunity register, progression of Livingstone Nature Based resilience	<b>Goal:</b> The capacity of Reef communities, Traditional Custodians and industries to adapt to a changing climate is increased <b>Strategic Action 1.3</b> Improve

					project – coastal demonstration site.	information and planning for community and industry climate adaptation <b>Strategic Action 1.4</b> Build community and industry capacity and capability to adapt to climate change <b>Goal:</b> Science and knowledge are advanced, easily accessible and able to be used in decisions <b>Strategic Action B.2</b> Strengthen engagement of policy makers, managers, Traditional Custodians and stakeholders in science and research
Shoreline Management	Implement recommendations from Shoreline Management Plan, which provides guidance on management measures to address key issues and further protect our coastal assets and encourage ecosystem resilience.	External Funding when available	Livingstone Community	Sustainability	Ongoing with current focus on managing sand dune vegetation vandalism, coastal lighting retrofit, involvement of traditional custodians in	<b>Goal:</b> Key habitats are being actively rehabilitated or restored <b>Strategic Action 5.3</b> Enhance protection,

					coastal management, Manage vehicle incursions in dune systems, Pandanus dieback treatments, and limit impacts from vehicle access at Bangalee	rehabilitation and restoration of key coastal and catchment ecosystems
Coastal Precinct Planning Working Group	Utilisation of a Whole of Organisational approach to coastal management activities, operations and projects.	LSC In-Kind	Internal Council Units	Natural Resource Management	Ongoing	<b>Goal:</b> Collaboration and effective partnerships between managers, partners and stakeholders are maintained and enhanced <b>Strategic Action A.2</b> Foster partnerships for Reef protection
Eco-certified Tourism Destination Capricorn Coast	Attain Eco-certified Tourism Destination accreditation for the Capricorn Coast to highlight and promote the unique local environment and eco-tourism opportunities.	External Funding (Department of Tourism, Innovation and Sport)	Capricorn Enterprise	Sustainability	Ongoing until June 2024	<b>Goal:</b> Adoption of best practice voluntary compliance and stewardship behaviours is maintained and increased <b>Strategic Action A.1</b> Foster connection, education and stewardship of the Reef
Livingstone Nature Based	Employment of a fixed term project officer to deliver a	External Funding (Queensland	Traditional Custodians, Capricorn Coast	Sustainability	Ongoing until December 2024	<b>Goal:</b> Key habitats are

Resilience Project	nature based solutions framework and to establish 2 demonstration sites (1 coastal and 1 catchment based) to highlight nature based solutions as a viable response to climate induced natural hazards.	Reconstruction Authority)	Landcare, Fitzroy Basin Association/Capricornia Catchments			being actively rehabilitated or restored <b>Strategic Action 5.3</b> Enhance protection, rehabilitation and restoration of key coastal and catchment ecosystems
Citizen Science Coastal Monitoring	Management of Coast Snap devices to involve the community in contributing to coastal monitoring.  Friends of the Beach initiatives for data collection	LSC In-Kind  External Funding	Livingstone Community	Sustainability	Ongoing	<b>Goal:</b> Science and knowledge are advanced, easily accessible and able to be used in decisions <b>Strategic Action B.2</b> Strengthen engagement of policy makers, managers, Traditional Custodians and stakeholders in science and research

## Future projects wish list

Project Name	Description	Financial / Resource Requirements	Link to Reef 2050 Plan
Coastal Monitoring Program	Develop a formal coastal monitoring program and joint data sharing program with state government agencies, Universities and LGAQ to track coastal and foreshore changes in accordance with the Our Living Coast Strategy and Shoreline Management Plan.	External Funding when available	<b>Goal:</b> Science and knowledge are advanced, easily accessible and able to be used in decisions <b>Strategic Action B.2</b> Strengthen engagement of policy makers, managers, Traditional Custodians and stakeholders in science and research
Coastal Creek Inlets Management	Management of coastal creek inlets such as Causeway Lake and Barwells, Williamson and Ross Creek to prevent and manage coastal erosion	External Funding when available	<b>Goal:</b> Key habitats are being actively rehabilitated or restored <b>Strategic Action 5.3</b> Enhance protection, rehabilitation and restoration of key coastal and catchment ecosystems
Bangalee /Todd Avenue Shoreline Enhancement Project	Foreshore rehabilitation, revegetation and public education /appreciation of coastal values at Bangalee/Todd Ave Yeppoon. Incorporate minor public infrastructure and interpretative signage.	External Funding when available	<b>Goal:</b> Key habitats are being actively rehabilitated or restored <b>Strategic Action 5.3</b> Enhance protection, rehabilitation and restoration of key coastal and catchment ecosystems
Shoreline Erosion Management Plans	Development of Shoreline Erosion Management Plans for Muskies and Putney/Fishermans (GKI) Beaches to sustainably manage specific erosion and erosion management processes.	External Funding when available	<b>Goal:</b> Key habitats are being actively rehabilitated or restored <b>Strategic Action 5.3</b> Enhance protection, rehabilitation and restoration of key coastal and catchment ecosystems
Coastal tenure review and management	Review and management of coastal tenure arrangements to ensure better protection of environmental values.	External Funding when available	<b>Goal:</b> Key habitats are being actively rehabilitated or restored <b>Strategic Action 5.3</b> Enhance protection, rehabilitation and restoration of key coastal and catchment ecosystems
Further studies, assessments and design in coastal hazard areas.	Includes: Frequency of sand scraping works, condition assessment of seawalls (Yeppoon, Keppel Sands), shire wide sand sourcing investigation, geotechnical studies on selected beaches, and catchment flooding (Keppel Sands)	External Funding when available	<b>Goal:</b> Science and knowledge are advanced, easily accessible and able to be used in decisions <b>Strategic Action B.2</b> Strengthen engagement of policy makers, managers, Traditional Custodians and stakeholders in science and research

## Land-based run-off

Action	Description	Financial/Resource Commitment	Partnerships	Responsible department/position	Project Status	Link to Reef 2050 Plan
Implement Livingstone Biodiversity Strategy	Strategy to guide the management of Livingstone's biodiversity, particularly on Council-controlled land.	LSC Budget, External Funding	Livingstone Community	Natural Resource Management	Ongoing. Current focus on the following: liaison with traditional custodians on biodiversity management, collaborate and partner with community, participate in local and regional environmental groups, habitat restoration, implement bushfire mitigation on Council land, pest management activities, provisions of environmental advice to community and internal Council departments, maintenance of Community Nursery, and development of resources on biodiversity	<p><b>Goal:</b> Key habitats are being actively rehabilitated or restored</p> <p><b>Strategic Action 5.3</b> Enhance protection, rehabilitation and restoration of key coastal and catchment ecosystems</p> <p><b>Goal:</b> Science and knowledge are advanced, easily accessible and able to be used in decisions</p> <p><b>Strategic Action B.2</b> Strengthen engagement of policy makers, managers, Traditional Custodians and stakeholders in science and research</p>

Pest Management programme, including pest control, education, and biocontrol	Treatment and control of declared pests on public land. Education to landholders of their obligations with regards to pest management under the Biosecurity Act. Maintain biocontrol nursery.	LSC Budget, External Funding	N/A	Pest Management, Open Spaces, Natural Resource Management	Ongoing	<b>Goal:</b> Outbreaks of pests, introduced species and disease are reduced <b>Strategic Action 5.1</b> Strengthen strategic management of established pests, introduced species and disease
Feral Goat population reduction on Woppa (Great Keppel Island)	Reduce the impacts of feral goats on significant natural ecosystems and prevent ongoing erosion and sediment inputs to the Reef.	External Funding	Traditional Custodians. landholders, community, Department of Resources and Biosecurity Qld	Pest Management, Natural Resource Management	To Commence	<b>Goal:</b> Outbreaks of pests, introduced species and disease are reduced <b>Strategic Action 5.1</b> Strengthen strategic management of established pests, introduced species and disease
Livingstone Planning Scheme	Provisions, Policies and Mapping to control potential impacts from developments. Includes significant vegetation protection, wetland and waterway protection, encouragement of Water Sensitive Urban Design (WSUD) in developments, Erosion and sediment control requirements, storm water management in the Great Barrier Reef catchment	LSC Budget	N/A	Strategic Planning	Ongoing	<b>Goal:</b> Science and knowledge are advanced, easily accessible and able to be used in decisions <b>Strategic Action B.2</b> Strengthen engagement of policy makers, managers, Traditional Custodians and stakeholders in science and research



<p>Membership of Reef Urban Stormwater Management Group (RUSMIG)</p>	<p>RUSMIG represents the key urban stakeholders in the Great Barrier Reef catchment, including Local Governments, Regional Natural Resource Management bodies, the Queensland Department of Environment and Heritage Protection, and the Great Barrier Reef Marine Park Authority and which aims to improve runoff to the reef, community education/involvement, voluntary programs are important initiatives helping to increase awareness and address the issues of urban estuaries concerning water quality within Reef Catchments.</p>	<p>LSC In-Kind</p>	<p>Other Councils, Consultancies, government agencies, LGAQ</p>	<p>Infrastructure, Natural Resource Management</p>	<p>Ongoing</p>	<p><b>Goal:</b> The quality of water is improved through increased effective land management practices in catchments <b>Strategic Action 2.1</b> Implement the Reef 2050 Water Quality Improvement Plan to meet its targets and undertake a 5-yearly review</p>
<p>Implement Resource Recovery and Waste Strategy</p>	<p>Strategy to drive the circular economy in Livingstone</p>	<p>LSC Budget, External Funding</p>	<p>Livingstone community</p>	<p>Waste Services, Sustainability</p>	<p>Ongoing – focus on activities diverting waste from the landfill, planning for landfill cell extension, maintenance of Livingstone Waste Wise App, continued operation of Resource Recovery Centre and Recycle Market, reuse of products (cardboard, glass, wood, waste oil),</p>	<p><b>Goal:</b> Science and knowledge are advanced, easily accessible and able to be used in decisions <b>Strategic Action B.2</b> Strengthen engagement of policy makers, managers, Traditional Custodians and stakeholders in science and research</p>

					advocacy to and support of LAWMAC (Local Authority Waste Management Advisory Committee North Queensland).	
Best Practice Erosion and Sediment Control	Proactive program to compliance, train, educate and demonstrate best practice erosion and sediment on development and building sites for Council staff, development industry, builders and the Livingstone community.	LSC Budget and In-Kind	Development and Building Industry, Community	Development Assessment and Compliance, Environmental Health, Infrastructure, Natural Resource Management	Ongoing	<b>Goal:</b> The quality of water is improved through increased effective land management practices in catchments <b>Strategic Action 2.1</b> Implement the Reef 2050 Water Quality Improvement Plan to meet its targets and undertake a 5-yearly review
Implementation of Open Spaces Framework	The primary intent of the Framework is to interconnect numerous open space related initiatives under one umbrella in order to more efficiently and effectively deliver open space services to Shire residents and visitors. Focus on themes such as Greening Livingstone and the use of nature based solutions.	LSC Budget	N/A	Economic Development (Placemaking)	To Commence	<b>Goal:</b> Science and knowledge are advanced, easily accessible and able to be used in decisions <b>Strategic Action B.2</b> Strengthen engagement of policy makers, managers, Traditional Custodians and stakeholders in science and research

## Future projects wish list

Project Name	Description	Financial / Resource Requirements	Link to Reef 2050 Plan
Fig Tree Creek Master Plan Co-Design Project	Co-design project which will engage and build capacity in internal stakeholders to enable effective consultation with the community to seek feedback and inform the delivery of the Fig Tree Creek Master Plan.	External Funding when available	<p><b>Goal:</b> The quality of water is improved through increased effective land management practices in catchments</p> <p><b>Strategic Action 2.1</b> Implement the Reef 2050 Water Quality Improvement Plan to meet its targets and undertake a 5-yearly review</p> <p><b>Goal:</b> Key habitats are being actively rehabilitated or restored</p> <p><b>Strategic Action 5.3</b> Enhance protection, rehabilitation and restoration of key coastal and catchment ecosystems</p>
Fish Friendly Infrastructure	Incorporate fish passages into new culverts/bridges	External Funding and LSC Budget when available	<p><b>Goal:</b> Key habitats are being actively rehabilitated or restored</p> <p><b>Strategic Action 5.3</b> Enhance protection, rehabilitation and restoration of key coastal and catchment ecosystems</p>
Waterways Report Card	Introduce a Report Card for waterway health for coastal catchments currently not covered.	External Funding when available and partnerships	<p><b>Goal:</b> The quality of water is improved through increased effective land management practices in catchments</p> <p><b>Strategic Action 2.1</b> Implement the Reef 2050 Water Quality Improvement Plan to meet its targets and undertake a 5-yearly review</p>
Capricorn Municipal Design Guidelines (CMDG) amendments	Update CMDG with sustainable/best practice design principles and provisions incorporated.	LSC Budget when available	<p><b>Goal:</b> The quality of water is improved through increased effective land management practices in catchments</p> <p><b>Strategic Action 2.1</b> Implement the Reef 2050 Water Quality Improvement Plan to meet its targets and undertake a 5-yearly review</p>

Oxford Street Water Quality and Habitat Restoration Project	Develop and enhance urban stormwater treatment using best practice techniques and natural ecosystem solutions.	External Funding when available	<p><b>Goal:</b> The quality of water is improved through increased effective land management practices in catchments</p> <p><b>Strategic Action 2.1</b> Implement the Reef 2050 Water Quality Improvement Plan to meet its targets and undertake a 5-yearly review</p> <p><b>Goal:</b> Science and knowledge are advanced, easily accessible and able to be used in decisions</p> <p><b>Strategic Action B.2</b> Strengthen engagement of policy makers, managers, Traditional Custodians and stakeholders in science and research</p>
---	--	---------------------------------	--

## Direct use

Project Name	Description	Financial/Resource Commitment	Partnerships	Responsible department/position	Project Status	Link to Reef 2050 Plan
Capricorn Coast Local Marine Advisory Committee (CCLMAC) membership	The CCLMAC is made up of local voluntary community based members from reef interest groups, government agencies and community members who advise the Great Barrier Reef Marine Park Authority on Marine Park management issues at a local level.	LSC In-Kind	N/A	Corporate Services/Elected Members	Ongoing	<p><b>Goal:</b> Collaboration and effective partnerships between managers, partners and stakeholders are maintained and enhanced</p> <p><b>Strategic Action A.2</b> Foster partnerships for Reef protection</p>
Fishing Frenzies Program	Program aimed at educating and demonstrating sustainable fishing practices for youth	External Funding	Community	Community Development and Engagement	Ongoing	<p><b>Goal:</b> The threats associated with</p>

						<p>legal and illegal fishing are reduced</p> <p><b>Strategic Action 3.6</b> Implement measures that reduce impacts from fishing activities, verify data and improve understanding to strengthen management of fishing activities</p>
--	--	--	--	--	--	--

### Future projects wish list

Project Name	Description	Financial / Resource Requirements	Link to Reef 2050 Plan
Partnership project to reduce litter and waste associated with recreational fishing.	Further develop Source Reduction strategies and facilities to reduce the incidence of fishing waste in the marine environment.	External partnerships/funding and LSC Budget	<b>Goal:</b> The threats associated with legal and illegal fishing are reduced <b>Strategic Action 3.6</b> Implement measures that reduce impacts from fishing activities, verify data and improve understanding to strengthen management of fishing activities
Causeway Lake Recreation	Develop public interpretative materials for sustainable fishing and recreation and ongoing protection of environmental values.	External Funding and LSC Budget when available	<b>Goal:</b> The threats associated with legal and illegal fishing are reduced <b>Strategic Action 3.6</b> Implement measures that reduce impacts from fishing activities, verify data and improve understanding to strengthen management of fishing activities

## Reef heritage and social values

Action	Description	Financial/Resource Commitment	Partnerships	Responsible department/position	Project Status	Link to Reef 2050 Plan
Sustainable Livingstone Expo	Biennial Information, education and behavioural change event featuring interactive activities, workshops, stalls, and displays incorporating major themes such as: Waste, Water, Energy, Biodiversity, Transport, Food, Community Gardens, Buildings and Procurement	Council Budget / External Funding	Livingstone Community	Natural Resource Management	Ongoing	<b>Goal:</b> Collaboration and effective partnerships between managers, partners and stakeholders are maintained and enhanced <b>Strategic Action A.2</b> Foster partnerships for Reef protection
Livingstone Community Plan: Towards 2050 implementation	The Livingstone Community Plan: Towards 2050 is a long-term strategic plan developed with the community and captures the themes, strategies, and goals prioritised by the community that will move the region towards its vision for 2050. A wide range of stakeholders from across the community have contributed to the development of this 30-year whole-of-community plan, and have enabled it to capture the shared vision and values of the Livingstone community.	Council Budget	Livingstone Community	Community Partnerships	Ongoing	<b>Goal:</b> Collaboration and effective partnerships between managers, partners and stakeholders are maintained and enhanced <b>Strategic Action A.2</b> Foster partnerships for Reef protection
Sustainable Livingstone Program	Suite of education, awareness raising and behavioural change activities ranging from	Council Budget	Livingstone community	Sustainability	Ongoing	<b>Goal:</b> Adoption of bestpractice voluntary

	topics such as Recycling, Composting, Bicycle Upcycling, Solar power and Sustainable Living to build capacity in the community and further mainstream the topic of sustainability.					compliance and stewardship behaviours is maintained and increased <b>Strategic Action A.1</b> Foster connection, education and stewardship of the Reef <b>Strategic Action A.2</b> Foster partnerships for Reef protection
Major Environmental Events	Involvement in major events (National Tree Day, World Wetlands Day, World Environmental Day, Recycling Week etc.)	Council In-Kind External funding and partnerships	Various	Natural Resource Management, Sustainability	Ongoing	<b>Goal:</b> Adoption of bestpractice voluntary compliance and stewardship behaviours is maintained and increased <b>Strategic Action A.1</b> Foster connection, education and stewardship of the Reef <b>Strategic Action A.2</b> Foster partnerships for Reef protection
Community Environmental Groups Support	Ongoing affiliations with various community environmental groups including: Envirolink-Landcare, Emu Park Bushcare Group; Remnant Vegetation Study Group; Yeppoon Inlet Association; Plastic Free CQ.	Council In-Kind	Various	Natural Resource Management, Sustainability	Ongoing	<b>Goal:</b> Adoption of bestpractice voluntary compliance and stewardship behaviours is maintained and increased

	Livingstone Traditional Custodians					<p><b>Strategic Action A.1</b> Foster connection, education and stewardship of the Reef</p> <p><b>Strategic Action A.2</b> Foster partnerships for Reef protection</p>
Team Turtle CQ (TTCQ) Team Hatchlings Project	A youth-led marine turtle conservation and stewardship initiative involving participants from last year's Capricorn Coast Community Action Plan (CAP) projects and with a focus on undertaking community-based marine turtle education and awareness-raising activities to highlight negative human impacts and inspire positive stewardship for reef and marine environments.	Council In-kind	Fitzroy Basin Association, Community	Natural Resource Management	Ongoing	<p><b>Goal:</b> Lighting and recreational impacts on sensitive shoreline ecosystems and cultural sites are reduced</p> <p><b>Strategic Action 2.3</b> Improve practices in sensitive shoreline ecosystems</p>
Local Schools Support	Support local schools with information and education and on specific environmental and sustainability projects	Council Budget and Council In-Kind	Schools/Education Establishments	Sustainability, Natural Resource Management	Ongoing	<p><b>Goal:</b> Adoption of best practice voluntary compliance and stewardship behaviours is maintained and increased</p> <p><b>Strategic Action A.1</b> Foster connection, education and stewardship of the Reef</p> <p><b>Strategic Action A.2</b> Foster partnerships for Reef protection</p>



## Future projects wish list

Project Name	Description	Financial / Resource Requirements	Link to Reef 2050 Plan
Marine Turtle Rehabilitation Facility	Establish a marine turtle rehabilitation facility for the Capricorn Coast	External Funding when available	<b>Goal:</b> Collaboration and effective partnerships between managers, partners and stakeholders are maintained and enhanced <b>Strategic Action A.2</b> Foster partnerships for Reef protection
Traditional Custodian Partnerships and Capacity Building	<p>Build partnerships with Darumbal and Woppaburra groups to deliver on ground natural resource management projects.</p> <p>Develop resources with traditional custodians for public education such as interpretive signage and booklets about coastal plants and wildlife, cultural heritage in the coastal zone</p>	External Funding when available, LSC In-Kind, Traditional Custodian Ranger Programs	<p><b>Goal:</b> Traditional Custodians are supported to continue to manage sea Country</p> <p><b>Strategic Action 3.4</b> Strengthen Traditional Custodians management of sea Country through agreements and partnerships</p> <p><b>Goal:</b> Traditional Custodians Indigenous heritage, rights and responsibilities are incorporated into all facets of management</p> <p><b>Strategic Action A.3</b> Formally recognise Traditional Custodian customary rights and interests</p> <p><b>Strategic Action A.4</b> Increase opportunities for Traditional Custodian co-management and co-governance of the Reef</p> <p><b>Strategic Action A.5</b> Increase and strengthen capacity and involvement of Traditional Custodians in protecting and managing the Reef</p>