

# Recovery Wrap

## Livingstone

Ed.6 March 2023

Welcome to the  
Recovery Wrap  
Livingstone.

### Useful Contacts

Community Recovery 1800 17 33 49  
Lifeline's crisis support 13 11 14  
13HEALTH 13 43 25 84  
For information [about disaster recovery funds](#) for affected communities.

[Additional information for disaster affected areas.](#)

### Support Groups

Australian Red Cross 1800 733 276  
Salvation Army 13 72 58  
Volunteering Queensland  
<https://www.volunteeringqld.org.au/>  
At. Vincent de Paul  
Assistance 1800 846 643  
RSPCA  
General enquires 0734 269 999  
Blue Care 1300 849 513  
St. John Ambulance 1300 785 646

### What's coming up?

**Maryvale Cuppa and Chat:** drop-in bushfire recovery gathering, will be held Saturday 11/3/23 from 4-5pm at Maryvale Rural Fire Brigade Station. This will be a great opportunity to meet your neighbours and find some important information.

## CUPPA AND CHAT

Come along for a cuppa at your local Rural Fire Station. Talk to your neighbours and access information about:

- ▶ How to find where the smoke is coming from
- ▶ Where to go after a disaster strikes
- ▶ Working through the recovery process

SATURDAY 11 MARCH, 4PM TO 5PM  
MARYVALE RURAL FIRE BRIGADE STATION  
5 PADDY'S SWAMP ROAD  
BUNGINDARRA



AFTERNOON  
TEA  
PROVIDED

The second **Adelaide Park Cuppa and Chat** will be held in mid-May. Watch this space for the date and details.

### School Tours at The Hub

The Disaster Management staff are looking forward to more interactive tours in the coming months with several school groups planning their visit. We have hosted up to 120 students at a time, giving them an immersive hands-on experience, whilst demonstrating the capabilities of the coordination centre.

### What's been on?

#### Adelaide Park Cuppa and Chat, 3<sup>rd</sup> December.

Adelaide Park Rural Fire Brigade hosted a bushfire recovery session run by Livingstone Shire Council and funded through the Black Summer Bushfire Recovery funding by the Australian Government.

The 1-hour session covered-

- How to find where the smoke is coming from?
- Where to go after a disaster
- Working through the recovery process
- Responses to community questions and concerns
- What projects Council is working on regarding recovery



This session was well attended by enthusiastic community members

and a big thank you to the brigade and Rural Fire Service for hosting us.

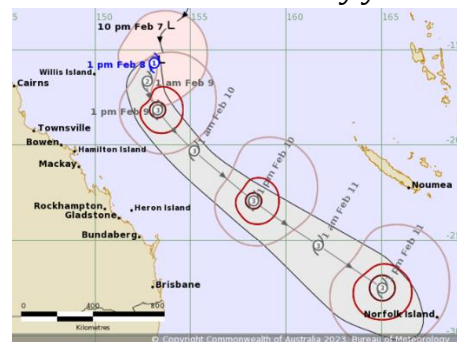
### Level Up Tour

On Thursday the 23<sup>rd</sup> of February, Council had the privilege of meeting 12 young people from the Coal Train Level Up program. The group undertook an escape room challenge at the Hub making their way to the Coordination Centre. From there they participated in disaster coordination scenarios and role playing from the perspective of Planning, Logistics, Operations, Public Information and Incident Control. Logical and innovative solutions were suggested by the group to respond to community prevention, preparedness, response and recovery tasks.



### Tropical Cyclone Gabrielle

Although Tropical Cyclone Gabrielle remained well offshore of the Queensland coast, it devastated the North Island of New Zealand. Our thoughts are with the New Zealand community as they now commence significant recovery efforts which will take many years.



# Recovery Wrap

## Livingstone

### Ed.6 March 2023

Cyclone season does not officially end until 30 April and this has been a timely reminder for residents and business to be prepared. To undertake your own preparedness check visit the [Disaster Prepared Communities Portal](#):

[bepreparedlivingstone.qld.gov.au](http://bepreparedlivingstone.qld.gov.au)

To receive weather warnings direct to your inbox, register for [Opt-In Notifications](#):

[disasterlivingstone.qld.gov.au](http://disasterlivingstone.qld.gov.au)

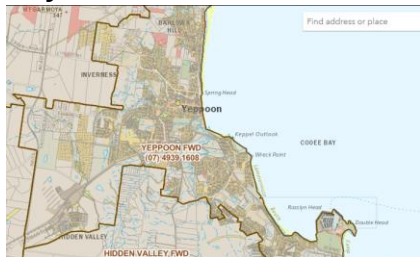
*How can you be better Prepared?*

Where can you find information that can assist in your decision-making process?

If you go to [Livingstone's Disaster Dashboard](#) you can find a host of information to assist you before, during and after a disaster.

There is also a number of apps and websites that may assist you to find more information.

Queensland Fire & Emergency Services (QFES) [Fire warden finder](#) is a great tool that you can enter your address and find the phone number of your local fire warden. It also gives an indication of which fire area you may reside in.



QFES's [permit to burn map](#) displays permits that have been obtained in the last 30 days. A fire may or may



not have occurred close to this location. Each point is labelled with its permit date.

The Emergency Plus app is a tool that could save your life. In an emergency, time and location accuracy are critical. It is a tool that will help you call Triple Zero (000) quickly and allow you to accurately communicate your location to emergency call takers.



#### My Location

Tell the operator your location

Lincoln Crescent  
Woolloomooloo NSW 2011

Latitude

-33.86815°

Longitude

151.21891°

what3words

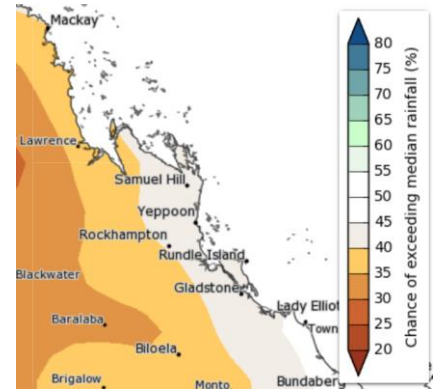
///lunch.splash.runner



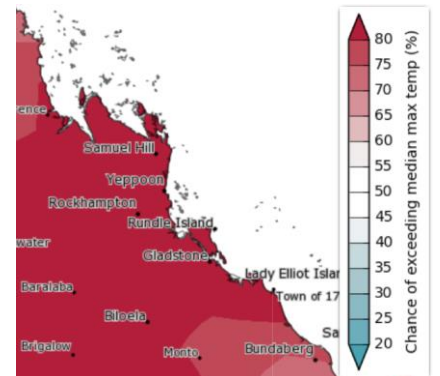
### The Season Ahead

#### Livingstone's Autumn 2023 Weather Outlook

Based on the Bureau of Meteorology climate outlooks, the forecast reflects the status and outlook for several climate drivers, including a declining La Niña.



Most of the Livingstone area has a 45% chance of exceeding median rainfall, whilst the western perimeter of the shire is anticipated to have a 35% of exceeding median rainfall.



There is also modelled to be an 80% chance of exceeding median maximum temperatures.

Historical maximum temperature median averages from 1981-2018 for the Livingstone area range between 24-27 degrees Celsius. Whilst median minimum temperatures for the March to May period are historically around 18 degrees Celsius.

For more information visit the Bureau of Meteorology's webpage. [www.bom.gov.au](http://www.bom.gov.au)

disaster management