



CLEAN & GREEN newsletter



Livingstone Shire Council is committed to diverting waste from our Landfill and encouraging behaviour change with avoidance, reuse and recycling of materials by residents in our community. Our vision is that our Livingstone Shire residents transition to a circular economy for better health, environmental and sustainability outcomes.

The circular economy focuses on better use of natural resources. This quarter, we'd like to give an example of how Council is reabsorbing waste back into our systems. Council disposes of green waste that is trimmed from your parks at the Yeppoon Landfill and after it has been ground, uses the resulting mulch on the trees and gardens in the Shire. This mulch assists keeping moisture at the roots of our plants in our hot CQ climate.



CONNECT WITH YOUR COUNCIL

TELEPHONE

Customer Support
1300 790 919

Libraries
(07) 4913 3850

MAIL

PO Box 2292
Yeppoon QLD 4703

WEBSITE

www.livingstone.qld.gov.au



@LivingstoneShireCouncil



@LivingstoneShireCouncil



@LivingstoneShireCouncil



@CouncilLSC



Mayor Andy Ireland
mayor@livingstone.qld.gov.au
0459 101 130



Cr Adam Belot - Deputy Mayor
adam.belot@livingstone.qld.gov.au
0427 311 430



Cr Pat Eastwood
pat.eastwood@livingstone.qld.gov.au
0437 410 833



Cr Andrea Friend
andrea.friend@livingstone.qld.gov.au
0459 392 411



Cr Glenda Mather
glenda.mather@livingstone.qld.gov.au



Cr Clint Swadling
clint.swadling@livingstone.qld.gov.au
0447 526 100



Cr Rhodes Watson
rhodes.watson@livingstone.qld.gov.au
au243

Waste Not, Want Not This Christmas

Among other more heartfelt things, Christmas is a time for creating thousands of tonnes of waste.

Some items for everyone to consider:

- Plastic Christmas trees are re-useable, but when too old or broken, they can't be recycled and must go to Landfill. Real trees can be mulched and the material used for gardening. Tinsel trees with a metal trunk can be disposed at Council's Waste Facilities and is recycled with our other metals.

- Christmas decorations are made from all sorts of materials and generally aren't recyclable. Tinsel is plastic and in particular causes significant issues at the Material Recycling Facility (MRF) as it gets wrapped around the conveyer belts and other machinery causing equipment break down.

Consider donating these items to a creative person who uses them to make new cards and decorations.

- Fairy lights can't go into the kerbside recycling bin because they're electronic and long and stringy and will get caught in the conveyer belts at the MRF. They can be taken to a Council Waste Facility and recycled as eWaste.

- Wrapping Paper can be recycled depending on what type of paper it is. Cardboard and paper wrapping that isn't shiny can be recycled in your

kerbside recycling bin, remove all tape first. Foil and plastic paper can't be recycled, unwrap this paper carefully and reuse it or dispose of it in your general waste kerbside bin. There's some confusion around cellophane wrap – some is plastic and some is cellulose.

A standard test for cellophane is the 'tear test'; if you can tear it, it's cellophane and can't be recycled but can be put in your home compost bin. If it stretches, it's plastic, and can't be recycled so needs to be placed in your domestic waste bin.

- Used tissue paper and Napkins can be placed in your home compost bin.

- Plastic plates, cups and glasses, once rinsed, can be placed in your kerbside recycling bin.

Plastic cutlery is too small and the wrong shape to be placed in your recycling bin, these items go into your kerbside general waste bin.

Christmas and New Year Waste Services

All kerbside waste and recycling collection services will continue as normal over the Christmas and New Year period.

All Council waste facilities in the Shire will be closed on the Christmas Day public holiday on Monday 25 December 2023 only.

Illegal Waste Disposal at Yeppoon Landfill

A creative way to reuse rather than waste!

Some months ago, a business customer illegally disposed of metal waste in the greenwaste pile.

If our Contractor were to grind the greenwaste into mulch, he would have broken the blades on his grinding machine which is a significant expense to this local contractor who employs people from our local community.

These inconsiderate actions by one local business can have a huge impact on another local business!

The metal was found by staff on site and they turned it into a metal man who is our new mascot and can be seen at the domestic check in shed.



CRRC - Household Items That Can Be Easily Be Diverted

Our Community Resource Recovery Centre (CRRC) can help if you are in need

The Community Resource Recovery Centre (CRRC), located at Yeppoon Landfill, is set up with bays for our residents to place their metals, cardboard, eWaste, car batteries, domestic cooking oil, domestic motor oil, comingle recyclables, small pieces of timber and items that can be sold in the Yeppoon Reuse Market (previously known as the Tip Shop).

This helps our community to divert as much waste as possible. To make this easier when you arrive at the Yeppoon Landfill and to save time and resources, we encourage you to sort your load at home before arriving at the waste facility.

The Yeppoon Reuse Market is open each Tuesday, Thursday and Saturday (except public holidays) between 8:00am and 4:00pm



Plastic Free CQ - Have You Heard?

Plastic Free CQ works directly with food businesses in Livingstone and Rockhampton to help them eliminate single-use plastic items, including takeaway containers, coffee cups, lids, cutlery, water bottles and straws.

Plastic Free CQ congratulates the Queensland State Government and welcomes the inclusion of wine and spirit bottles in the Container for Change program. From 1 November 2023, wine and spirit bottles are now included in the container for the change scheme in Queensland. All glass wine and spirit bottles from 150ml to 3L will be accepted for a 10-cent refund at Queensland's container refund points. Also, the Queensland Government has given wine and spirit manufacturers until January 2027 to display the 10-cent refund marking on their labels. During this grace period, eligible glass wine and spirit bottles can be returned for a refund without the 10-cent mark.

Community drives these changes and the hospitality community has been heard. All hospitality premises can now tap into the container for change programs in some way. The service is free and should be utilised to aid in Queensland's circular economy. Set up a system that's easy for staff to engage. Contact Plastic Free CQ for more info or to become a member of this growing zero-plastic single-use waste movement. Join Plastic Free Places, Boomerang Alliance Australia.

Council's Waste Services team hope you have found this newsletter of value. You can find all our eNewsletters on Council website on this link:

<https://www.livingstone.qld.gov.au/downloads/download/149/waste-and-recycling-newsletter>

Containers for Change

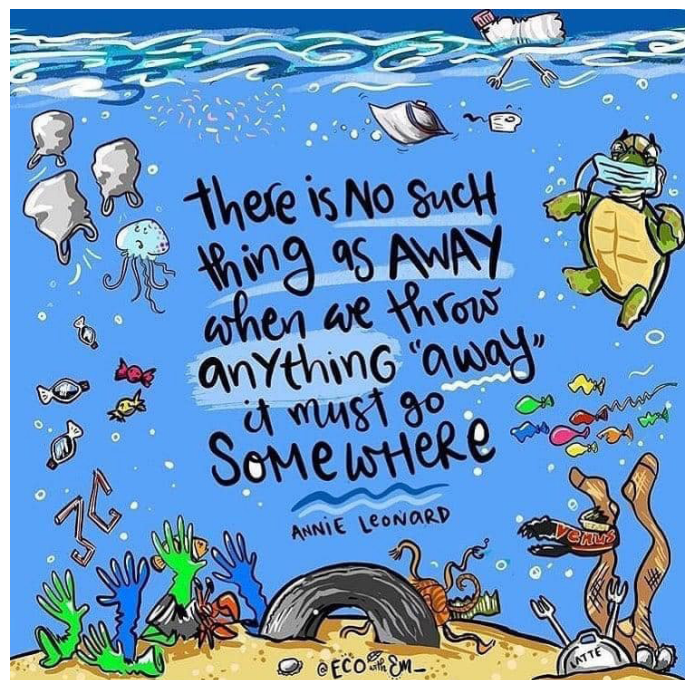
Containers for Change continues to be used by many Livingstone Shire residents!

Containers for Change is a not-for-profit organisation who have transformed container recycling and litter reduction in Queensland since November 2018. In an Australian-first from 1 November 2023, they will accept glass wine and pure spirit bottles in their 10-cent refund system.

Since launching in Livingstone Shire, 51.81 million containers have been returned to local container refund points for recycling, putting \$5.18 million back in the pocket of residents, community groups, charities and businesses.

Information on what is accepted at Containers for Change can be found here:

<https://www.qld.gov.au/environment/circular-economy-waste-reduction/reduction/container-refund>



To read all of Council's Clean & Green waste eNewsletters go to Council's website at www.livingstone.qld.gov.au/newsletters

